



Your Goal

Your Future

Your Vision

What is the 'right path' toward your future?
What could be the 'right way' to reach your vision?

These questions motivated our beginning.
MIDAS IT leads the right path and
the right way to achieve the happiness of the
people through its technology.

CONTENTS

What is the 'right path' toward your future?
What could be the 'right way' to reach your vision?

WORLD'S LEADING SOFTWARE SOLUTIONS
FOR CIVIL & MECHANICAL ENGINEERING

002 PROLOGUE

CEO'S MESSAGE

010 INTRODUCTION

012 SPIRIT
The Technologist's Way

**RIGHT FUTURE
WE WILL LEAD IT**

Vision
Core Technology
Core Business
Major Business

**RIGHT QUALITY
WE DID IT**

Building Software
Bridge Software
Geotechnical Software
Mechanical Software
Engineering Consulting
e-Business Service
Recruitment Solution Business

004 RIGHT HAPPINESS
WE WILL BE THERE

Philosophy
Core Values

**GLOBAL NETWORK
HISTORY**

Certifications

100

106 EPILOGUE

These questions motivated our beginning.
MIDAS IT leads the right path and
the right way to achieve the happiness of the
people through its technology.

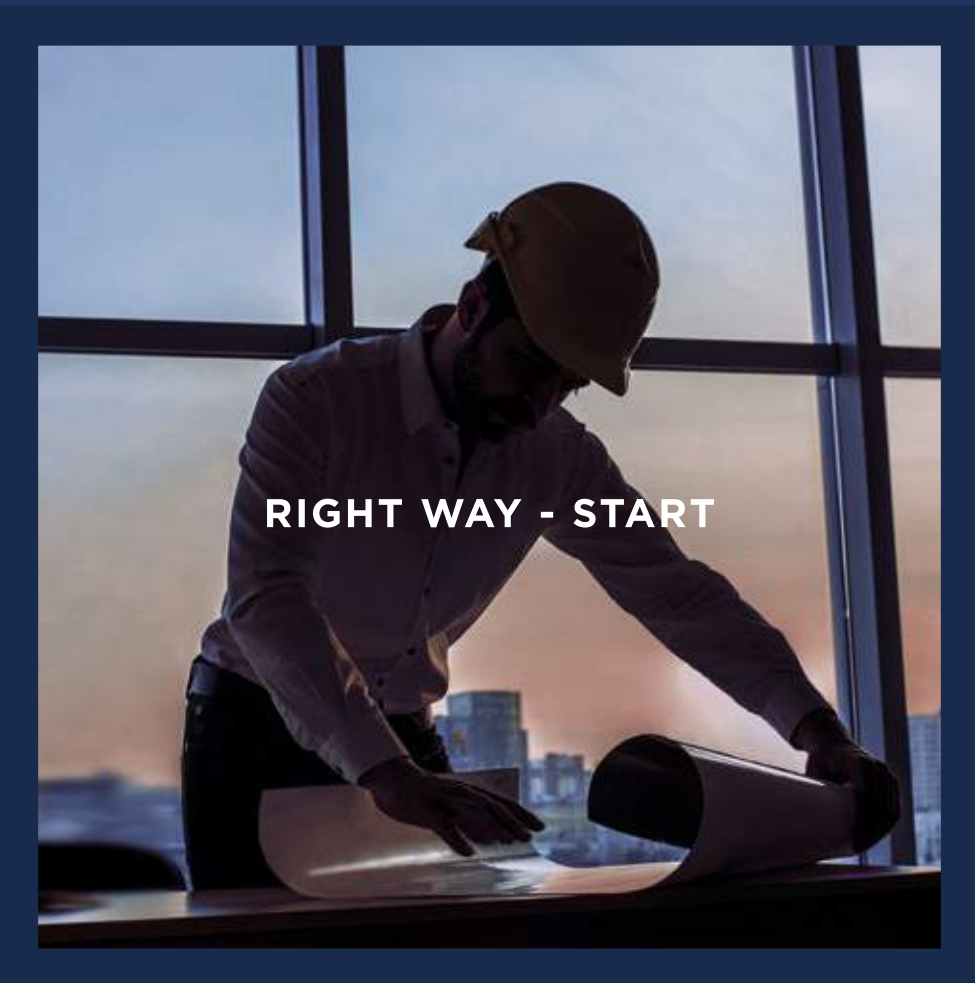
What is the 'right path' toward your future?
What could be the 'right way' to reach your vision?

These questions motivated our beginning.
MIDAS IT leads the right path and
the right way to achieve the happiness of the
people through its technology.

RIGHT WAY = **HONOR**

We uphold honor with an unwavering passion and practice doing the right things right as responsible technicians to pioneer technology and build trust. Technicians are reformers and pioneers, And realize dreams of our futures As scientists and innovators.

Our vision of the right way
starts with a technician's 'honor'



RIGHT WAY = **INNOVATION**

MIDAS IT creates happiness by providing our technology to 110 countries around the globe, And even now, we increase happiness made by MIDAS IT in places around the world. We hold unlimited innovation as the means to brighten the world with the best technology And work endlessly for technological developments in our efforts towards human happiness And make the impossible possible.

Our vision of the right path is through
a process of unlimited 'innovation'



RIGHT WAY = **HUMAN**

MIDAS IT's technologies are developed through the right method by the maximum effectiveness and efficiency with the highest quality for humanity's happiness. Our aim and purpose is ultimately for the 'happiness of the world and humanity'. That is exactly what we view as the 'right direction' and the 'right way' for the world.

Our vision of the right destination is 'Human'



CEO'S MESSAGE

MIDAS IT's mission is to promote mankind's happiness through technology

Our life's goal is happiness and MIDAS IT's dream is for world's happiness. At MIDAS IT, with our creative and innovative technologies, Take it to be our responsibility to increase happiness for the people and the world.

MIDAS IT holds dear the attitude to 'Do The Right Things Right' to withhold an honest direction as a 'Compass'. At MIDAS IT, nurturing talent in their naturalistic way and contributing to the world's happiness is our management philosophy

Thus, we view people as the aim rather than the means, to allow each member to express their abilities freely and support them in their pursuit of happiness, to aid progress towards enhanced happiness in the world.

Pursuit of members and customers happiness is MIDAS IT's ultimate objective and an unwavering principle. MIDAS IT treasures these principles, And promise continuance of our devotion towards world's happiness.



*If someone asks
"What does MIDAS IT do?"
We will answer this.
People in MIDAS IT
value honor and
try their best to bring
happiness for everyone
around the world.*

The 5th Chairman of the Korea Management Association (KMA)'s Executive Development

Current Special Committee Member on Innovation of College of Technology

Current Member of Private and Public Joint Software Task Force (TF)

Current Chairman of K-Software Forum

Former Member of Presidential Advisory Council of Science & Technology

Former Member of Mid- and Long-term Strategy for National Development Committee

Former Member of Civil and Environmental Engineering Field of the National Academy of Engineering of Korea

Chief Executive Officer
Lee, Hyung woo

이형우

INTRODUCTION

We better human life with creative technology and add to human happiness with compassion

MIDAS IT develops and distributes engineering software and provides total solution service for structural engineering and web business.

MIDAS IT holds the world's top technology in the core engineering analysis fields such as computer graphics simulation, advanced analysis and optimal design. MIDAS Family Programs have been applied to all the engineering and industrial applications for the safety and economic feasibility analysis and they holds the largest market share in the world's construction field. MIDAS IT has the vision to grow as the global engineering solution developer and distributor. MIDAS IT will continuously devote itself to achieve the technological independence of Korea and to create the standard technology of the world.

The driving force of MIDAS IT is its members who always put their best for the best outcome. As MIDAS IT has been making the impossible to possible, it will become the representative company which will introduce the excellence of engineering and internet technology of Korea. MIDAS IT is preparing for its leap with its limitless passion and devotion. The management goal of MIDAS IT is to nurture the people by the natural characteristics of human beings, to motivate its members to voluntarily create true values of their life, and to ultimately enlarge the happiness of the world.

01

To make an abundant world through technology

MIDAS IT creates an abundant world through the world's best technology. MIDAS IT is a provider of a variety of on/offline SW solutions which are applied to a wide range of industrial sectors such as engineering, medical, management, etc., and raises the global status of South Korea as the No.1 shareholders in Construction CAE SW market. We have grown to be the company who leads the domestic technology in online based web solution, Web & Mobile, Media Marketing, 3D CG, Digital Media, and Solution businesses.

02

Beautiful World Through Happy Management

AT MIDAS IT, we apply people centric management philosophy and company culture to implement what is also known as 'Humanistic Ideology of Naturalism'. Also, we share our approach of 'Humanistic Ideology of Naturalism' with the world for more efficient and effective management in small to medium sized companies who will shape our future. With development/acquisition of solutions which incorporate scientific and rational management methodologies, we aid growth of other small to medium sized companies.

03

MIDAS IT People Centric Management

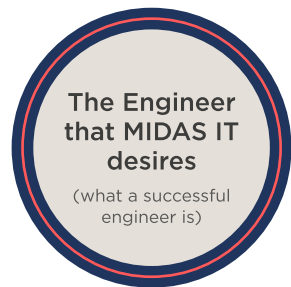
For many youths, MIDAS IT has become a dream company to work in. Having a variety of welfare facilities and systems as a standard, there are ongoing activities to share with those around us. MIDAS IT supports a unique management culture to promote free expression of skills and an upright personal growth for all its members.

SPIRIT

MIDAS IT always advances in the right direction to do the right things right. Our mission is to provide the world with utilitarian values that support human pursuit of happiness with our creative technology.

The Technologist's Way

The mission of MIDASian's is to seek MIDAS IT's core values in the way of engineer. The word 'Technologist' refers to any person who has the power to create a successful value with his own knowledge and technology. The rightness of being an technologist is to create true value and a better life through creative technology.



Public interest

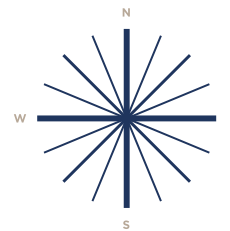
We follow the interest of the public based on accountability and determination.

Action

A technologist's knowledge should not be blocked however it should continue to spread for human happiness.

Sharing

An engineer's ability is given by nature to be able to share it with those that may not be as experienced as him.



MIDAS IT Compass Spirit

The needle of a compass constantly adjusts its position to always point to the same direction, and therefore symbolizes directedness, innovation and persistence. With a compass-like spirit MIDAS IT navigates toward the right values with unwavering passion and inventive perspective.

Right Things

This means aiming for true value and to make the best effort to achieve the best results. We always maximize the value by determining value in future opportunities, with focus on the customer.

Same Mind

Spontaneous participation based on the mutual communication and belief. The greatest asset of MIDAS IT is people. The motivation based on trust and respect sublimates the ability of an engineer into value for the world.



Same Goal

Seeking true value and fulfilling a vision. When we all possess the same vision and beliefs it enables us to receive a successful result of true value with the best interaction.

Same Method

Observing the MIDAS principles helps MIDAS IT to execute successful strategies. The best strategies with most successful results are executed with an action plan that is based on the compass principle, aiming towards maximization of customer and future values.



RIGHT FUTURE

WE WILL

LEAD IT

The Right Future, We Will Lead It.

MIDAS IT is not oriented towards short-term gains, but towards a continual pursuit on leading the world to a great future. MIDAS IT will remain in a leading position as a company that contributes to improving all industries with its competitiveness and productivity, by constantly studying its core technology for future growth. Also, we hope to provide a blueprint and lead the right way to achieve our aim of 'Humanity's Happiness' for the right future.

RIGHT



LEAD IT



VISION

The computer graphics based CAE software technology acquired by MIDAS IT is a globally acknowledged technology. With these core technologies, we will continue growth as the world's best CAE software developer and provider, And will also emerge as a world class business within the engineering consulting, web business solution and recruitment solution sectors.

MIDAS MISSION

Enrichment of Civilization,
Betterment of Mankind

Making the world a happier place with Human-oriented technology



Research Institute

Global leading group
in innovative fusion
simulation technology

CS Business

Global top 100 company in
combined engineering sector
Domestic top 10 company in
new media total service



SW Business

World's top engineering
solution partner

GLOBAL TOP 100

MIDAS IT has accomplished impracticable tasks, overcoming the difficult environment of the CAE industry in Korea. By using engineering simulation technology based our own techniques through high-tech graphics, we have been developing as the biggest company that offers CAE software solutions to the world.

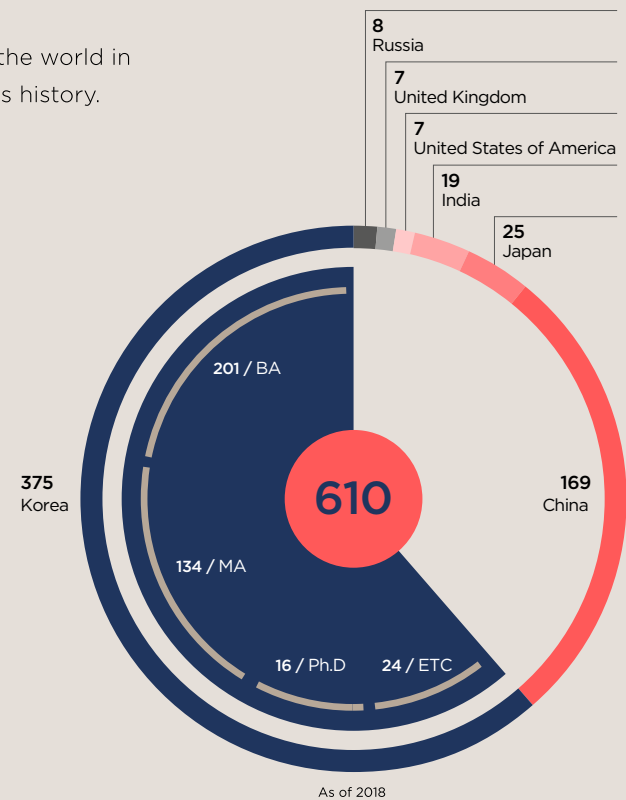


EMPLOYEES

The most talented people leading the world in technology and creating MIDAS IT's history.

49%
Ph.D / M.A staff - 49% of total

39%
International staff - 39% of total



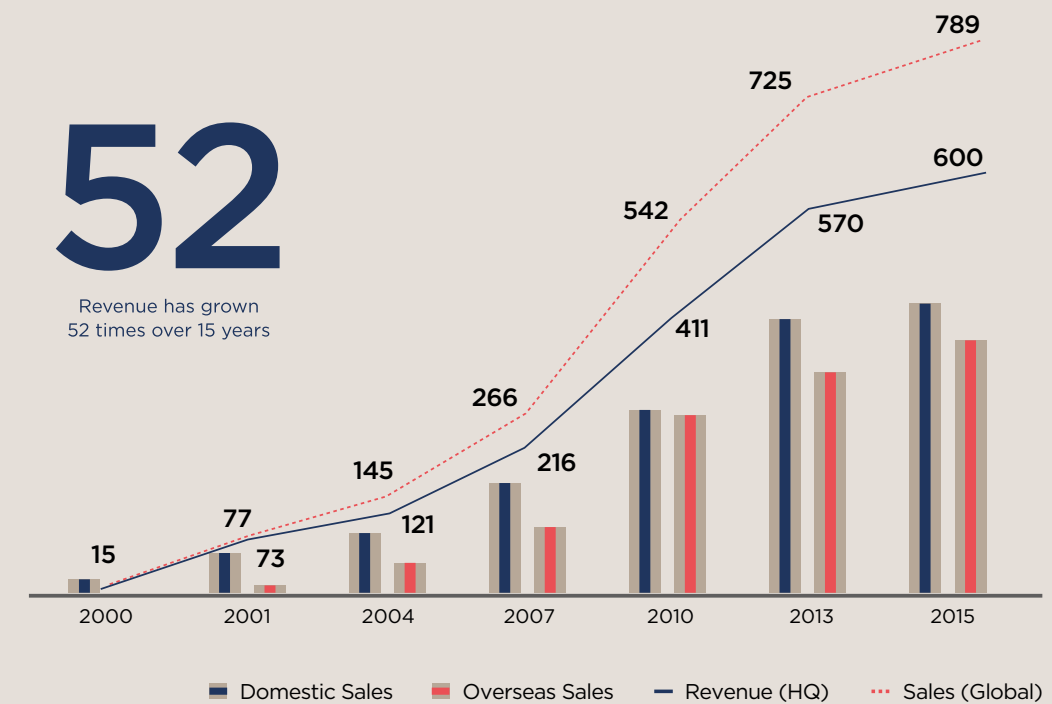
3 GREAT ACHIEVEMENTS

With an aim to increase the happiness for the people and the world, we have continuously made successful history since being found.



BUSINESS GROWTH CORPORATION

52
Revenue has grown 52 times over 15 years



CORE TECHNOLOGY

- 1 CAE software and simulation technology based on Computer Graphics**

 - Innovative computer graphics based structural geometry replication and modeling technology.
 - 3D computer simulation for validation of engineering technology.
 - Intuitive graphical user interface environment for pre/post processing.
 - Range of analysis algorithms, high class finite elements library, and improved solver performance.
 - Automatic and expressive handling of results for effective analysis and evaluation.
 - Database of design codes for automated design suggestions and checks.
 - Automated design and optimization of structural material member design.
- 2 Integrated engineering, design and analysis for structural, geotechnical and mechanical engineering disciplines**

 - Production of calculations and drawings for mechanical, pipe and civil works within the power generation and energy plant sector.
 - Total engineering services for steelworks plant sector.
 - Structural and fluid analysis of plant, vehicular, ship, electrical and mechanical equipment.
 - Specialized analysis (seismic performance assessment, SSI, etc.) for civil structures and geotechnics.
 - Planning, analysis, and design of high rise structural systems.
 - Design of industrial, office and commercial structures.
 - Structural monitoring for column gauging and maintenance, wind-induced vibration control, and seismic performance assessment.
- 3 Online-based web solutions technology**

 - Cross-media platform (Web & Mobile) development.
 - Online total advertisement maintenance (AD Analysis) solutions development.
 - 3D CG based virtual exhibition (MIDAS VX) development.
 - Internet based property management solution 'HousinX' created as the first private-sector developed application system.
 - Specialized tailored solution for online businesses.
 - Web storage 'M_Cubic' developed for sharing engineering specific information
- 4 Cloud based leasing solution for human resourcing recruitment development technology**

 - Web-builder for easy production and management of trendy recruitment webpages.
 - Highly flexible platforms tailorable to diverse company specific recruitment systems requirements.
 - Diverse options based system for automated screening of applicants.
 - Infographic career report generation using standardized data graphical expressions.
 - Completely online total recruitment evaluation system.
 - Live data analysis and report generation during screening phase.
 - Solution for managing recruitment related regulations and securities to provide a peace of mind.

With our technology, made by our hands, We spread the whole world of South Korea's excellence in engineering technology

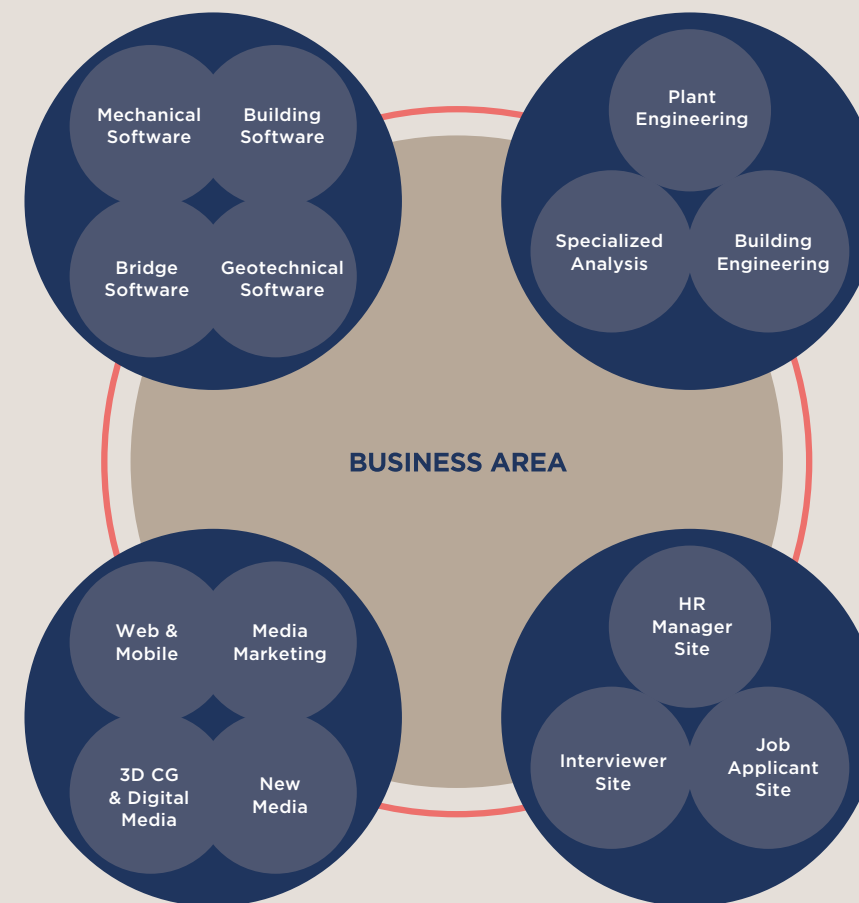
CORE BUSINESS

Software Business

The state-of the art engineering simulations software developer and provider for construction and mechanical sector

Engineering Consulting

Structural analysis and design for construction and plant engineering. Specialized structural and fluid analysis for mechanical and construction sector



e - Business

Web & mobile business
Cross media marketing
CG & virtual exhibition business
New media total service

Recruitment Solution

Solution for effective selection of key talent and efficient completion of tasks during the recruitment process

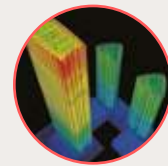
MIDAS has unique and widely recognized technology around the world.

MAJOR BUSINESS

Architecture, Engineering & Construction

Building, Bridge, Tunnel, Stadium, Plant, etc.

AEC SOLUTIONS



CAE
Present to Mid-term
(2011 - 2020)



CAD / CAED
Mid-to Long-term
(2011 - 2020)

CAE : Computer Aided Engineering
CAD : Computer Aided Design
CAED : Computer Aided Engineering Design

Market

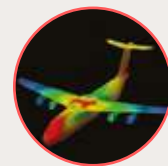
Sustainable growth

- Medicine Ergonomics Engineering
- Aerospace Engineering
- Robotics Engineering
- Future Residence Engineering
- Future Transport Engineering
- Neuro Engineering

Mechanical Design Automation

Machine, Vehicle, Shipbuilding, Aerospace, misc.

MDA SOLUTIONS



CAE
Present to Mid-term
(2011 - 2020)



CAD / CAED
Mid-to Long-term
(2015 - 2020)

Technology

Extendibility and convergence





RIGHT QUALITY

WE

DID IT

Technology of the right quality, we did it.

Currently, MIDAS IT is made up of 600 professionals based at branch offices in USA, Japan, China, India, UK, Russia, Singapore, and Dubai, and 35 distribution partners who exports to a global network of 110 countries worldwide to become the world's largest supplier within the construction CAE SW sector. The engineering business with specialized structural analysis and optimized design technology as a foundation will grow as a world class expert group in construction, plant, and specialized structures. The recruitment solution and web based solution businesses will also enter the global market to be established as a company with a global brand and service system.

RIGH

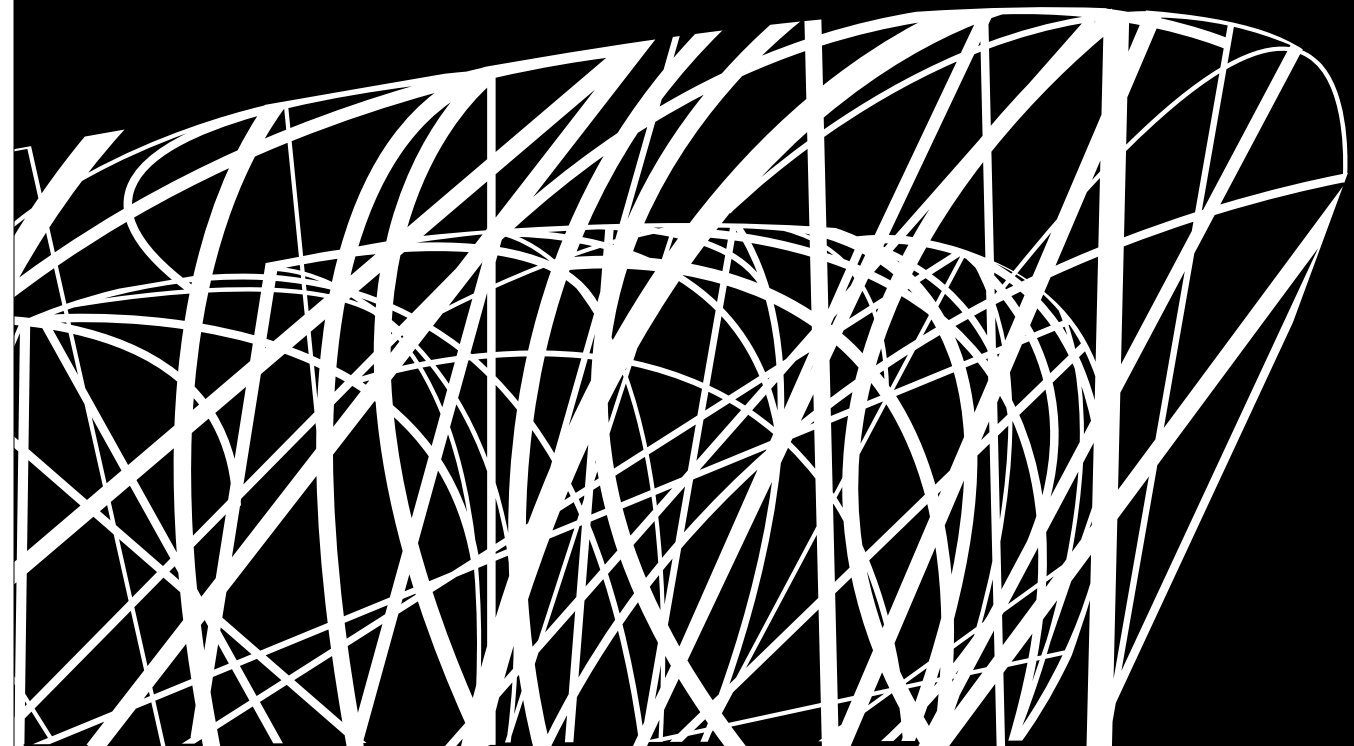
DID IT



ANALYSIS AND DESIGN SOLUTIONS FOR CONSTRUCTION

midas Gen is an integrated, general-purpose structural analysis system with an intuitive User Interface and computer graphics for buildings and other constructions. The User Interface provides excellent accessibility and efficiency on complex structures with modeling, analysis and design. It is loaded with high-performance Multi-Frontal solver and analysis algorithm, offering the best solution in the field of analysis of building structures in the domestic as well as international construction sector.

Building Software



midas Gen

Integrated Design System
for Building and General Structures

midas Design+

Structural Component Design & Detailing

midas Modeler

Automatic Generation of
3D Structural Analysis Model

midas Drawing

Auto-drafting Module to Generate Structural
Drawings and Bills of Material

midas Building Package / midas nGen

Next Generation Solution for Building
Analysis and Design

midas Foundation

Structural Analysis and Optimization Software
for Structural Foundations

midas ADS

Shear wall type Apartment Design System

midas SDS

Slab & basemat Design System

*** midas eGen**

Low-rise Structure Design Total Solution

*** midas Drawing (CAD)**

Drawing Documents Generate Plug-in base on CAD

*** midas ArchiDesign**

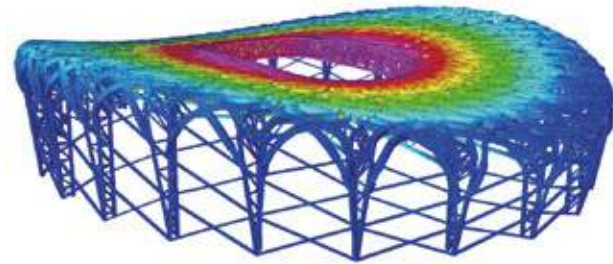
Information based Software Delivering a New Concept
for Drawing Generation

• specialized solution for construction design



Beijing National Stadium

The stadium is referred to as the 'Bird's Nest' because of its saddle-shaped steel roof and interwoven facade. The roof measures 330m long by 220m wide and weighs a total of 45,000 tons. Its upper surface is clad with ethylene tetra fluoro ethylene (ETFE) panels which let in natural light, and its lower surface has an acoustic membrane which reflects and absorbs sound. This maintains the atmosphere in the stadium.



Burj Khalifa

Burj Khalifa is the tallest building in the world. The structural system consists of a "buttressed" core, the hexagonal hub, and perimeter columns. The primary structural system is reinforced concrete. To account for the time-dependent concrete effects, a comprehensive construction sequence analysis incorporating the effects of creep and shrinkage was utilized to monitor and adjust for the time-dependent behavior of the structure.





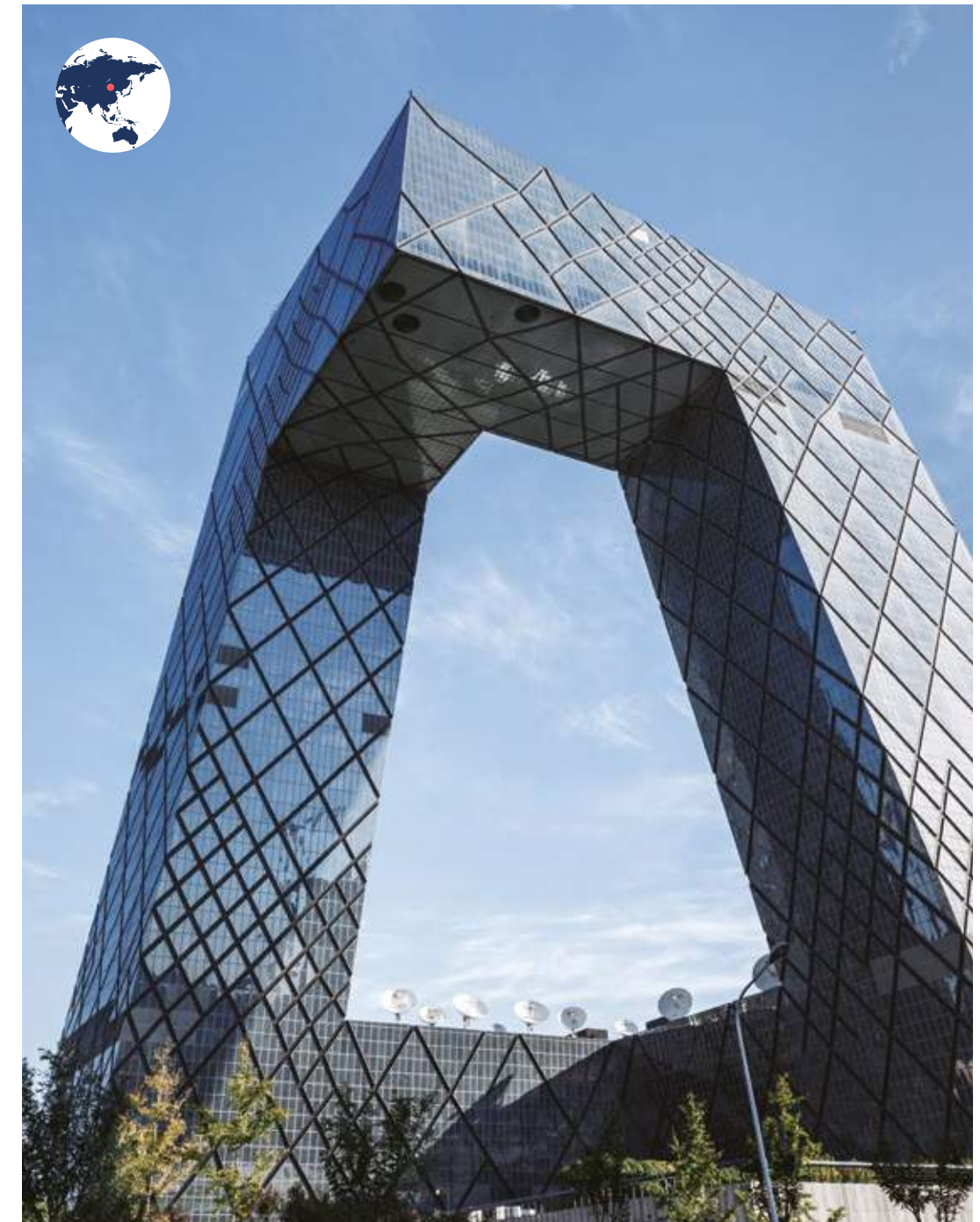
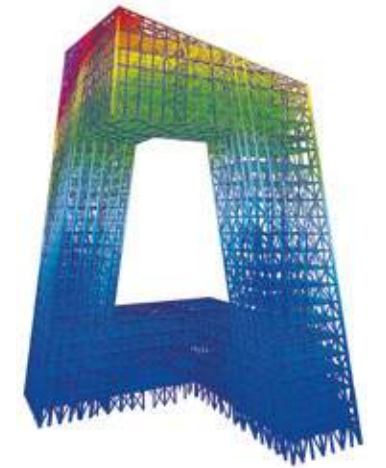
— Moscow City Palace Tower

The building, a twisting 46-story tower that is due for completion in the summer 2011, will serve as a prominent entryway into the Moscow City district. Occupying its southeastern pilots, which Connects to a completed pedestrian bridge.



— CCTV Tower

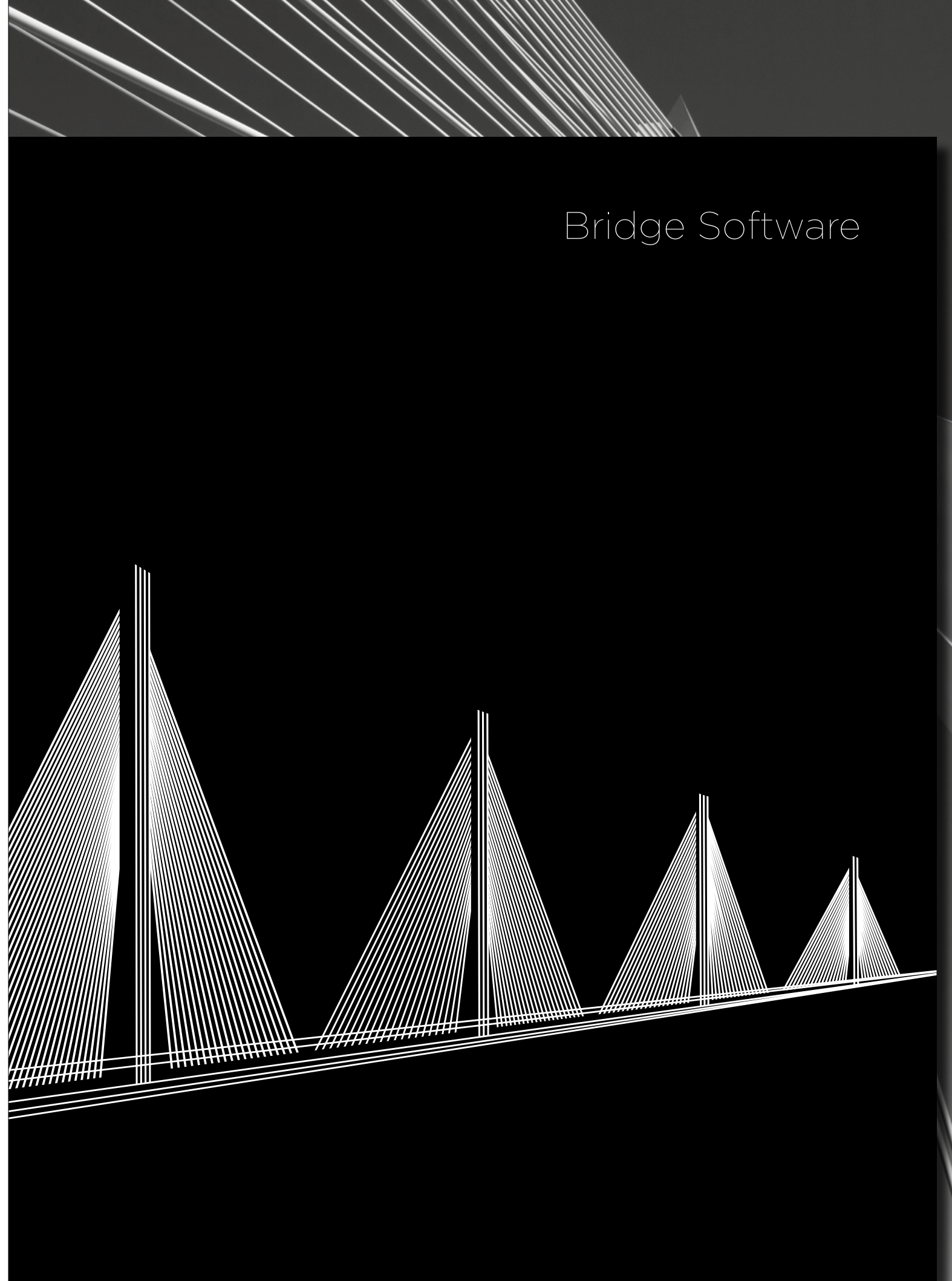
The design of the CCTV headquarters ignores the conventional concept of high-rise buildings. The unique geometry required the permission from the special review panel which breaks the building code in Beijing. The existing systems and techniques in gravity control technology were not applied to the CCTV building, which consists of two inclined towers. Each tower has a rooftop that is tilted 90 degrees from the top and bottom.



CIVIL ENGINEERING STRUCTURAL ANALYSIS AND DESIGN SOLUTION

midas Civil is a structural analysis program that integrates the analysis and design process of bridges into a single program with moving load analysis, PSC bridge design, Cable-stayed bridge design and Suspension bridge design. MIDAS FEA provides an optimum solution to investigate linear static failure, material / geometry nonlinearity, heat of hydration, contact, crack propagation, fatigue and other detailed analysis. And, MIDAS UMD is a program, which offers the best design efficiency and productivity with examination of the cross section structures, basic design, stress examination and so forth.

Bridge Software



midas Civil

Integrated Solution System for
Bridge and Civil Structures

midas FEA

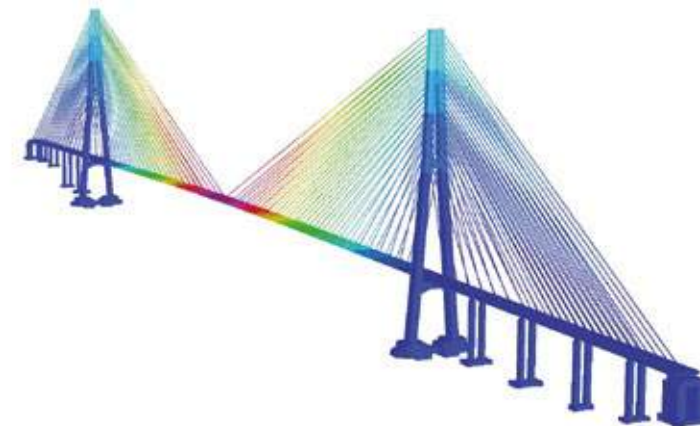
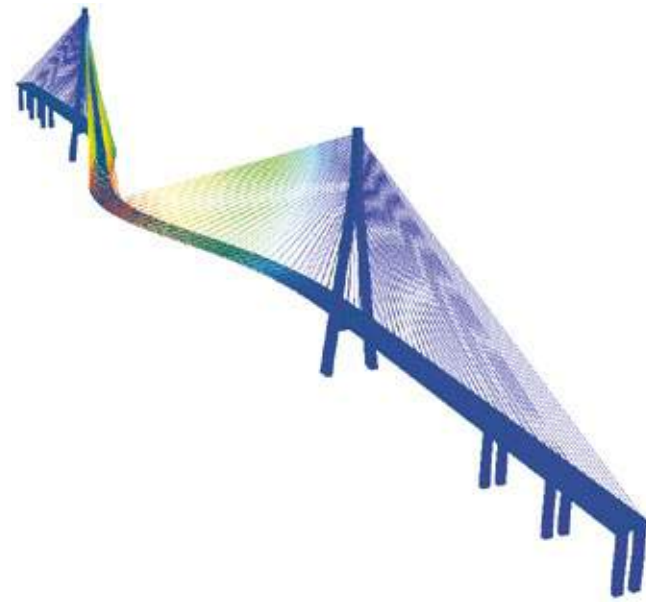
Advanced Nonlinear and
Detail Analysis System

midas UMD

Unit Member Design

Sutong Bridge

The total length of the crossing is 8,206m. The main bridge is a double-pylon steel box girder cable-stayed bridge. The central span of 1,088m has a navigation clearance of 62m, which allows fourth and fifth generation container ships to pass through irrespective of weather conditions. The bridge and its approaches are of a six-lane expressway design with a speed limit of 100km/h. The bridge set the record as the world's 2nd longest cable stayed bridge, only surpassed by the Russky Island Bridge in Russia, another project designed with MIDAS software.



Russky Island Bridge

The bridge to the Russky Island is one of the world's largest cable-stayed bridges with the 1,104m long of the central span and it establishes a new record of bridge building practice in the world. The bridge also has the highest bridge towers and the longest stayed cables.

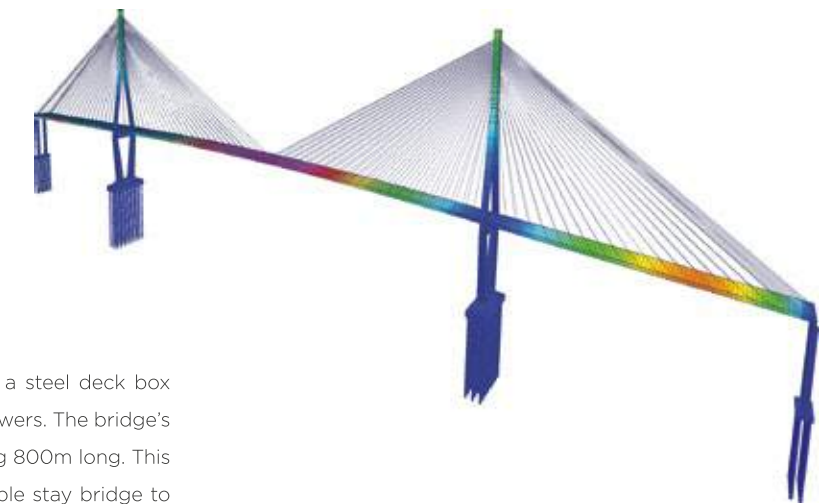
Gwangang Bridge

With a purpose to provide a detour for smooth transportation of industrial cargo, to solve traffic congestion of Sooyong-ro and Jungang-ro, and to improve the development of the marine tourism facility, the construction of Gwangang Bridge began in the city of Busan in August 1994, and was opened for traffic on January 1, 2013. The total length of the bridge is 7,420m, with Suspension Bridge in the middle having a length of 900m and an Access Bridge of 900m length. The bridge has two levels of 8 lanes each, with each level about 18-25m wide. It is the first two-level bridge in Korea, and the largest suspension bridge in the country. Moreover, the largest 3-span continuous truss bridge was built 360m on both sides of the suspension bridge.



Incheon Bridge

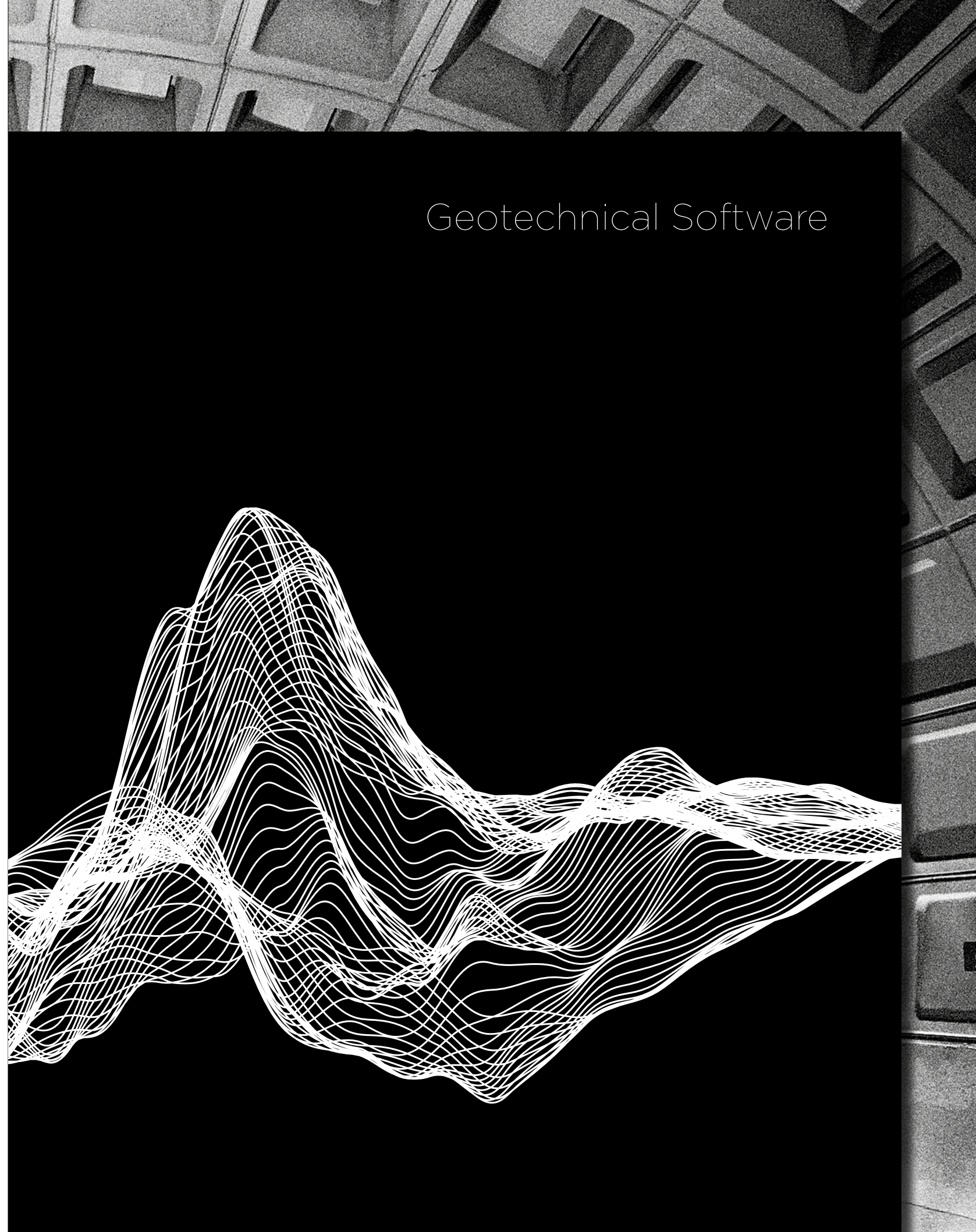
The Incheon 2nd Bridge is a cable-stayed bridge of a steel deck box supported by two inverted Y-shape main concrete towers. The bridge's total length is 21.38km, with the main span measuring 800m long. This holds the record of being the world's 9th longest cable stay bridge to date. The bridge is designed to withstand 72/ms velocity wind and 7-magnitude earthquake. It also features the world's largest ship impact protection system.



STRUCTURE ANALYSIS OF GROUND FIELD AND DESIGN SOLUTION

GTS NX is a finite-element-based analysis solution for geotechnical structures that is equipped with an optimized 64-bit solver on a next generation platform. SoilWorks is a total solution that reviews the practical design of tunnels, temporary facilities, slope faces, weak grounds, basics, penetrations and other fields of dynamic analysis and provides high-quality results. midas GeoXD is a system that provides drawing and design of temporary facilities on the same work environment through direct CAD integration, and calculates result values in the shortest possible time.

Geotechnical Software





GTS NX

GeoTechnical analysis System
New eXperience

SoilWorks

Geotechnical Solution for
Practical Design

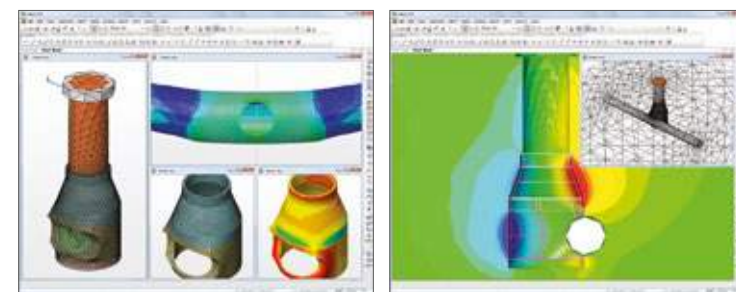
midas GeoXD

Temporary shoring & Settlement analysis
System for Excavation Design

King's Cross Station

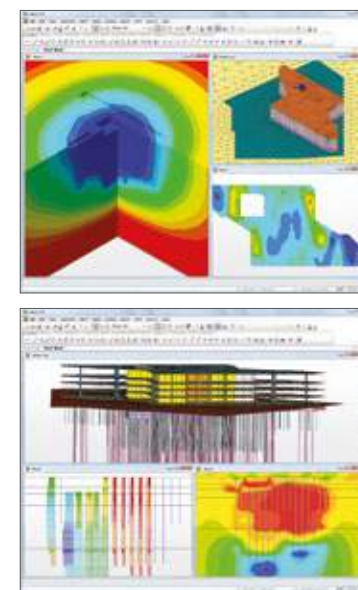
The King's Cross Station is a train station and a cultural heritage in London, United Kingdom. The station has made numerous appearances in British art and literature including Harry Potter series. In 2007, MIDAS software was applied in the restoration of the station to the lining design of shaft and impact assessment of

shaft construction on existing tunnel. The existing tunnel's side that intersects with the shaft has been reinforced with a tunnel barrier, and the cylindrical cross-section of the shaft was constructed with segmental lining. Subsequently, the existing tunnels have been carried out to the impact assessment and shaft lining design.



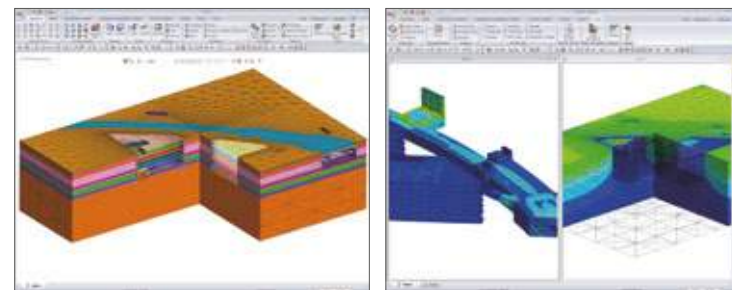
Dubai Tower

The Dubai Tower project entails the construction of an approximately 80-floor high rise tower with 5 basement levels. This will be the tallest structure in Qatar when it is complete. The tower is founded on a piled raft because of the soil's limited bearing capacity. midas GTS was applied in the 3D finite element analysis to predict settlement and raft foundation structural behavior.



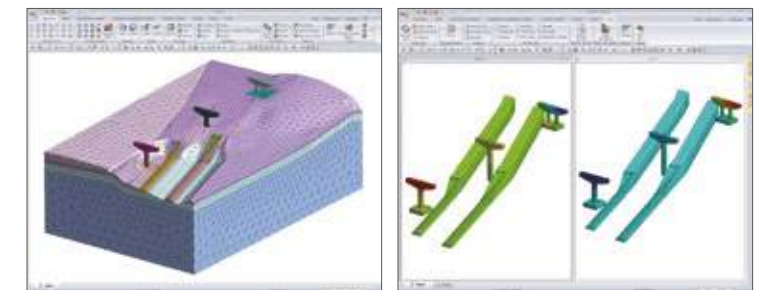
Seoul Subway Line 5

It is the model that carried out the stability review analysis due to the planned construction of the building adjacent to Seoul Subway Line 5. 3D analysis was conducted to examine the stability of subway and retaining walls due to the construction of more than 20 meters of excavation next to the subway section. We evaluated the stability of the retaining structure and the subway line structure wall.



East Sea Nambu Railway Line

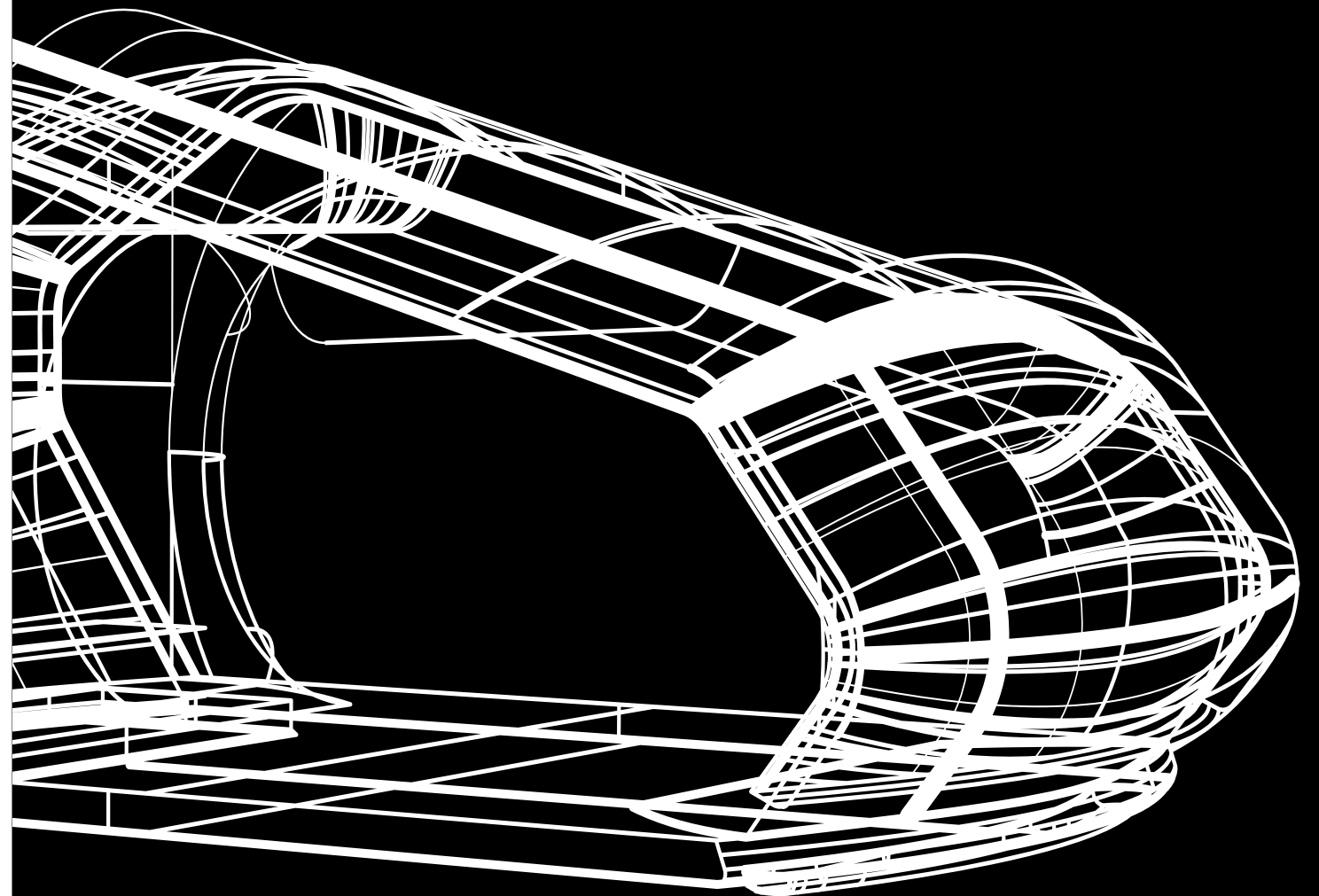
It is a model that crosses the East Sea southern railway line which examined the effect of the railway vibration. It was evaluated whether the vibration acting on the pier under construction falls within the permissible range when the 6-carriage train moving at 150 km/h.



INTEGRATED MULTI-DISCIPLINARY ANALYSIS SOLUTION FOR OPTIMUM DESIGN

NFX is a total analytical solution, which offers credible results and provides a user-friendly environment to produce a valuable outcome, fulfilling the optimum design and various structure / heat / flow analyses for general designers. midas NFX does not only provide programs to create solutions for customer value, but also offers various on/off-line education and technical support services. Also, midas MeshFree is a meshless method based solution to allow Simulation of user designed models without any geometric modifications to use the designed model directly for analysis. It is our pursuit to fundamentally change the existing design process.

Mechanical Software



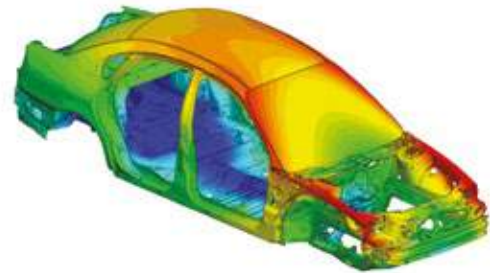
midas NFX

Linear static analysis (linear contact)
Modal & buckling analysis (prestress)
Nonlinear analysis (material, geometric & contact)
Fatigue analysis
Composite material analysis
32/64 bit high performance parallel solver
(multi-frontal, AMG & GPU)
Dynamic analysis (explicit nonlinear, time,
frequency & random vibration)
Multi-body system
Heat transfer & thermal stress analysis
(linear/nonlinear)
Optimization (Topology, size)
CFD (thermal, fluid flow,
moving mesh & free surface)

midas MeshFree

64 bit solver
Linear static analysis
Mode analysis
Heat transfer & thermal stress analysis
Fatigue analysis
Optimized design

Automobile



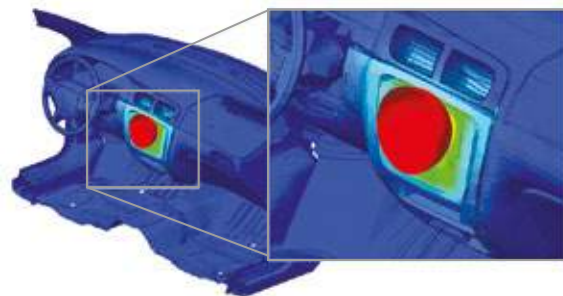
Dynamic analysis of a automotive body

Purpose of analysis	Performance enhancement in respect of the car's stability Fatigue life estimation of BIW structure through vibration tests
Type of analysis	Linear static analysis / Transient response analysis / Fatigue analysis
Contact condition	Evaluation of torsion / Bending stiffness Evaluation of front / Rear side rail stiffness Evaluation of failure mode using transient response analysis



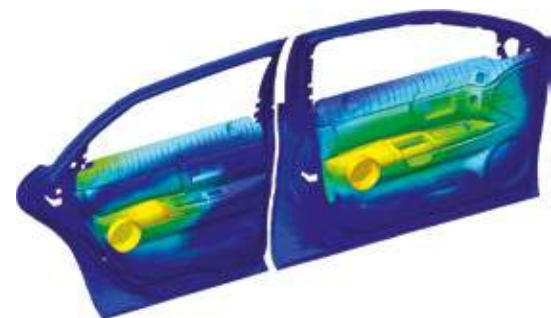
Seat Belt Anchorage Analysis

Purpose of analysis	Securement of the safety of a seat belt system
Type of analysis	Explicit nonlinear dynamic analysis
Contact condition	Analysis with respect to vehicle safety standards Analysis reflecting ECE regulation and FEMVSS



IP Head Impact Analysis

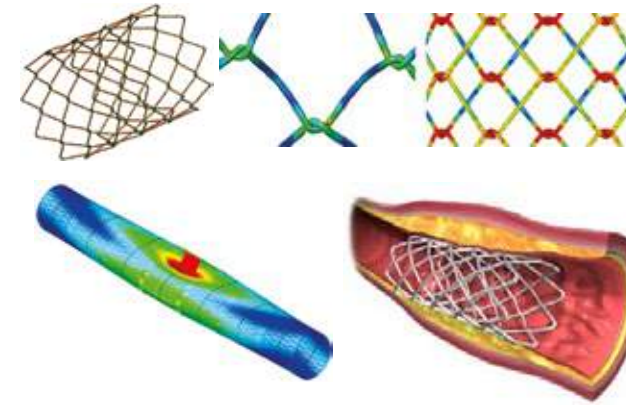
Purpose of analysis	Analyzing the collision between Instrument Panel and the passenger's head
Type of analysis	Denotative nonlinear dynamic analysis
Contact condition	The crash test result should comply with the required safety standard (ECE R21 & FMVSS201) in order to prevent injury to the passenger



Door Trim, The examination of impact analysis and fatigue durability

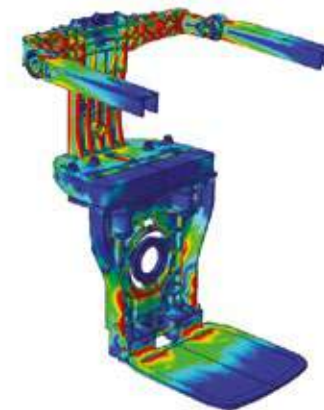
Purpose of analysis	Decreasing passenger's chest injury / Examining the fatigue durability of the door at opening and closing
Type of analysis	Explicit nonlinear dynamic analysis / Transient response Analysis / Fatigue analysis
Contact condition	Calculate maximum contact force generated due to collision between impactor and door trim / Minimizing passenger's chest injury by administering maximum impact load / Calculating the fatigue durability by applying the condition of Door opening/closing

Medical



Analysis of the strength of medical stent and durability

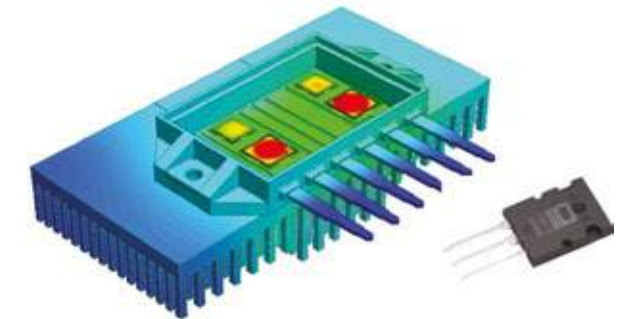
Purpose of analysis	The examination of fatigue endurance and the stress generated on a medical stent by expansion-contraction exercise in the organ system
Type of analysis	Material / Geometry / Contact nonlinear analysis / Fatigue analysis
Contact condition	General contact (the condition of auto-contact by solver)



Stair Lift, The examination of structure stability

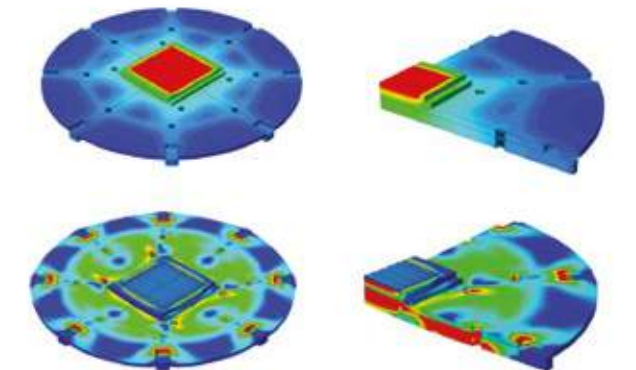
Purpose of analysis	The examination of deformation and strength if using Stair Lift
Type of analysis	Linear static analysis
Contact condition	Whole motion contact

Electronics



MOSFET, Heat Sink design for improvement of cooling performance

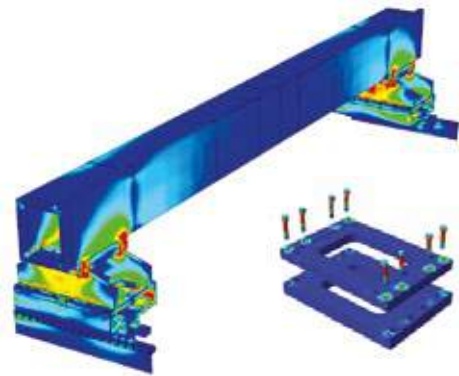
Purpose of analysis	Optimal Heat Sink design for a stable MOSFET / Examination of thermal deformation of MOSFET during use
Type of analysis	Transient heat transfer analysis, exothermic / Natural convection boundary
Contact condition	Full conduction (Thermal Contact)



Wafer Probe Card, Heat transfer / Thermal stress analysis

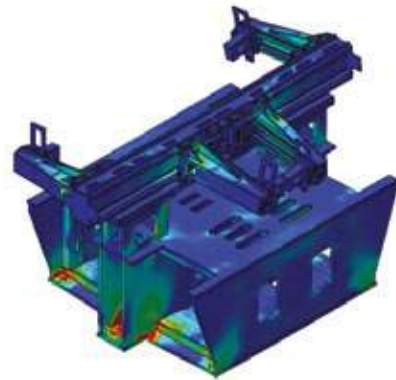
Purpose of analysis	Precision examination of silicon wafer considering thermal deformation
Type of analysis	Heat transfer analysis considering exothermic / Natural convection boundary condition / Thermal stress analysis considering temperature distribution
Contact condition	Precision examination of silicon wafer considering thermal deformation

Machinery and Equipment



Analysis of stability of moving equipment

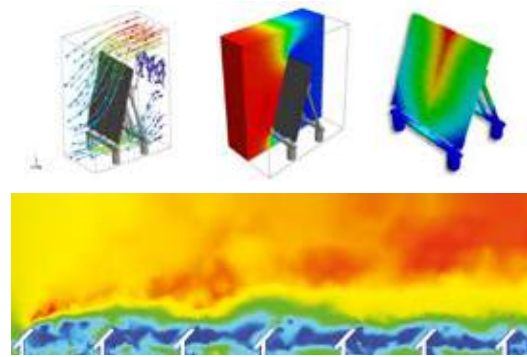
Purpose of analysis	Examination of the stability of the bolt, determination of the size and strength of the bolt
Type of analysis	Linear static analysis
Contact condition	Bidirectional sliding contact



The examination of semiconductor equipment stability

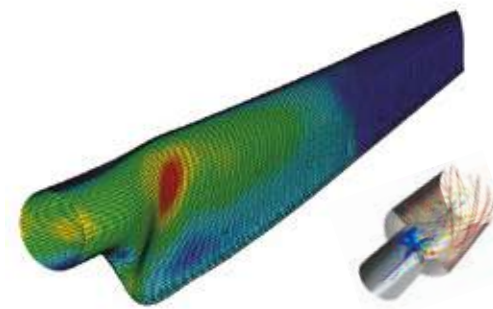
Purpose of analysis	Investigate the reduction of operating efficiency due to vibration
Type of analysis	Linear static analysis and heat transfer / Thermal stress analysis / Transient / Frequency response analysis / Multi Body Dynamics
Contact condition	Examination of stability of structure considering static and dynamic load / Analysis of vibrational characteristics of structure if operating at a high speed / Investigate occurrence of at operating conditions

New and Renewable Energy



Safety design of solar energy equipment considering wind load

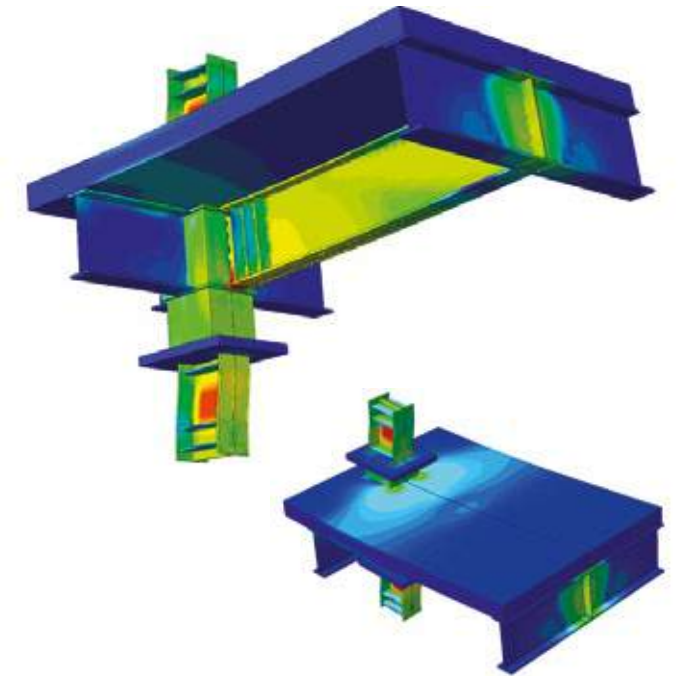
Purpose of analysis	Wind pressure computation of solar panel installation and investigate stability of the structure under wind load
Type of analysis	Linear static analysis / Flow analysis
Contact condition	Both positive and negative pressure applied to solar panel for flow analysis / Structure stability analysis of solar panel through coupled analysis



Stability and flow analysis of blade used for tidal power generation

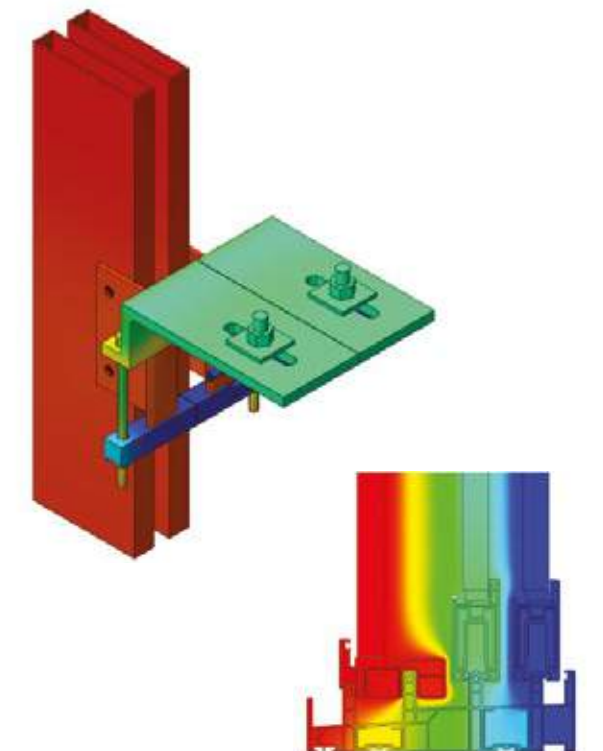
Purpose of analysis	Stability analysis of blade used for tidal power generation / Stability of flow of fluid in the structure
Type of analysis	Composite material analysis / geometric nonlinear analysis / flow analysis
Contact condition	Material nonlinearity of the composite material used in the blade / Ocean condition considered for flow analysis of the equipment

Civil and Architectural Construction Parts



Seismic capacity assessment of steel connections

Purpose of analysis	Assessment of seismic capacity performance of steel connections in a possible event of an earthquake
Type of analysis	Material nonlinear analysis / Geometric nonlinear analysis
Contact condition	Review the performance considering steel-concrete slab joint / Cyclic load applied translational forced displacement / Evaluation of energy absorbing capacity of steel connections



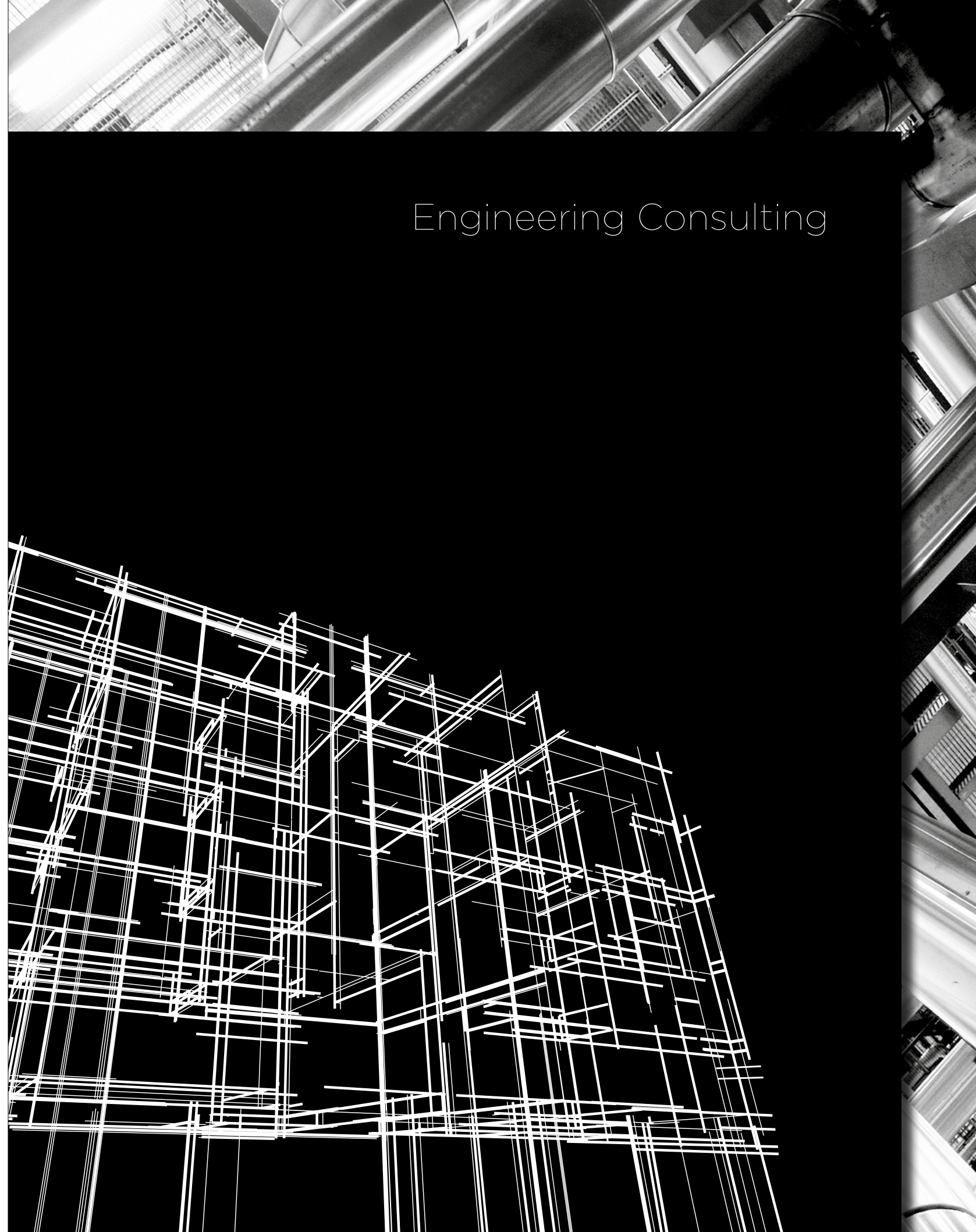
Stability and usefulness estimation of aluminum frame window

Purpose of analysis	Excessive deformation and breakage examination of the Anchorage System / Examination of heat transfer through features of window frames
Type of analysis	Geometric / Material / Contact nonlinear analysis / Heat transfer analysis
Contact condition	General contact, whole motion, bidirectional sliding contact / Heat characteristic analysis of internal window frame considering inside / Outside temperature

ENGINEERING CONSULTING SERVICES

Engineering consulting services provide a distinguished technological service in CAE analysis sector based on the practical and technological experience gathered over the years for plants, pipework, geotechnics, manufacturing, mechanical, and construction. With continual technological development leading to modernization of domestic engineering technology, we will develop into a world class engineering consulting group.

Engineering Consulting





Plant Engineering

Raw material transfer equipment design
Steel rolling and iron making processing plant design
Industrial plan design
Industrial plant pipework design
Steel processing plant pipework design
Environmental and water treatment
equipment pipework design
Civil engineering design for thermal and
nuclear power plants
Geotechnical design and analysis for plant structures
Optimized design of plant structures

Specialized Analysis & Engineering Consulting

Plant equipment, vehicle, radiation,
electromagnetic, ship and general mechanical
structural analysis and flow analysis
Seismic verification and performance assessment
(nuclear equipment, vibration equipment, etc.),
and civil structural and geotechnical
related specialized analysis
(seismic performance assessment, SSL, etc.)
Specialized analysis for civil structures
(PSC, Cable related specialized structures)
Safety assessment, analysis, and load capacity
assessment for civil structures
Construction phase behavioral analysis and site
work support for civil structures

Building Engineering

Optimized structural system selection and design
for high rise structures
Structural design of industrial, office, and
commercial facility
VE design technology for optimized air,
construction cost, and quality
Post-tension and precast concrete structure design
Structural monitoring for column gauging and maintenance,
wind-induced vibration control, and seismic
Performance assessment, and structural health monitoring

PLANT ENGINEERING

MIDAS IT provides clients utmost quality deliverables by utilizing various design programs with extensive experience in plant engineering. MIDAS IT provides optimal, cost-effective design by utilizing detailed structural analysis capabilities founded on structural simulation technology.

Mechanical design and structural engineering

Material handling system design and total engineering
Steel mill plant mechanical design and total engineering
Industrial plant mechanical design and total engineering

Piping design and related engineering

Industrial plant piping design and engineering
Steel mill plant piping design and engineering
Environment and water treatment facility piping design

Civil engineering design and structural engineering

Thermal & nuclear power plant design and engineering
Steel structure design and total engineering
Optimal design and engineering for systems and structures

Mechanical Design & Engineering



POSCO No.1 blast furnace 2nd revamping - Gas cleaning system

Location Kwangyang, Korea
System Steel / Shell
Use Dust collector
Scope Structural design & eng.
Client POSCO E&C



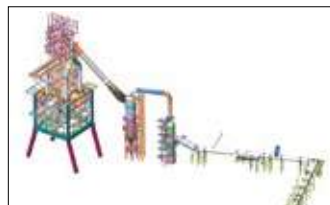
Chile Angamos power plant - Raw material handling system

Location Chile
System Steel
Use Raw material transfer facility
Scope BD / DD / structural design & eng.
Client POSCO Plantec



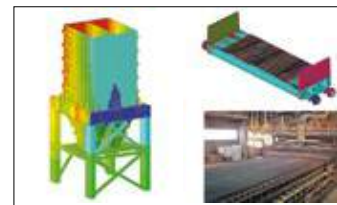
Indonesia KIDECO mine - Raw material handling system

Location Indonesia
System Steel
Use Raw material transfer facility
Scope BD / DD / structural design & eng.
Client KIDECO



Brazil CSP blast furnace

Location Brazil
System Steel / Shell
Use Blast furnace facility
Scope Structural design & eng.
Client POSCO E&C



Brazil CSP sintering facility

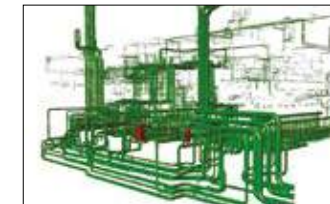
Location Brazil
System Steel / Shell
Use Sintering facility
Scope Structural design & eng.
Client POSCO E&C



Indonesia KIDECO moving machine

Location Indonesia
System Steel / Shell
Use Raw material transfer facility
Scope Structural design & eng.
Client KIDECO

Piping Design & Engineering



Brazil continuous casting facility

Location Brazil
Use Continuous casting facility
Scope Piping design
Client POSCO E&C



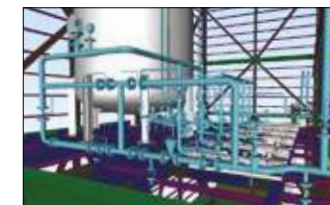
Indonesia steelworks

Location Indonesia
Use Steel production facility
Scope Piping design
Client POSCO E&C



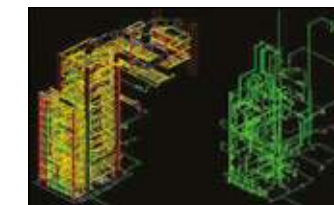
Indonesia continuous casting plant

Location Indonesia
Use Continuous casting plant
Scope Piping design
Client POSCO E&C



Pohang Finex briquetting facility

Location Pohang, Korea
Use Finex facility
Scope Piping design
Client POSCO E&C



Pohang heat recovery facility

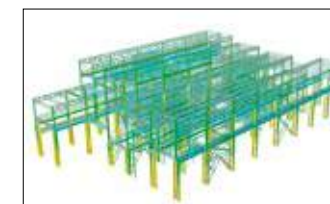
Location Pohang, Korea
Use Heat recovery facility
Scope Piping design
Client POSCO E&C



Pohang water treatment facility

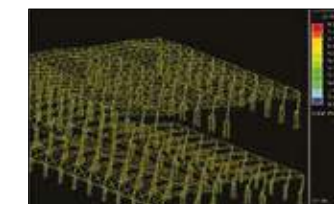
Location Pohang, Korea
Use Water treatment facility
Scope Piping design
Client POSCO E&C

Structural Design & Engineering



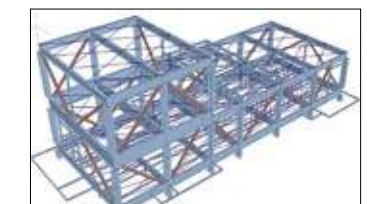
Cilegon steel mill plant

Location Indonesia
System Steel frame / Reinforced concrete
Use Steel production plant
Scope BD / DD / Structural design & eng.
Client POSCO E&C



Zhangjiagang STS hot rolling plant

Location China
System Steel frame
Use Hot rolling plant
Scope Structural design & eng.
Client POSCO E&C



Ichthys LNG facilities

Location Australia
System Steel frame
Use Offshore plant / sea transportation
Scope Structural design & eng.
Client INPEX / JGC Corporation

SPECIALIZED ANALYSIS & ENGINEERING CONSULTING

MIDAS IT's Specialized Analysis & Engineering Consulting Business provides high quality consulting services across the globe. Progressive engineering technology and experience in production design and performance verification in conjunction with advanced CAE technology have been accumulated over the years. MIDAS IT has pioneered Up-Front Engineering with extensive knowledge in internationally available materials and technologies and advanced analysis technology serving various industries such as automotive, electrical & electronics and defense industries. Value engineering has been another front for securing significant engineering experience. MIDAS IT's specialized consulting services promote the client's value and benefits as the top priority in pursuit of delivering the system of analysis process and verification technology for feasibility, validity, practicality and constructability.

Structural analysis and specialized analysis of industrial products

Plant facilities and materials, nuclear power plant equipment, automotives / SPV (Special Purpose Vehicles), aviation / shipbuilding / defense, semiconductor / electronics, civil and architectural engineering specialized analysis, industrial and transport equipment, etc.

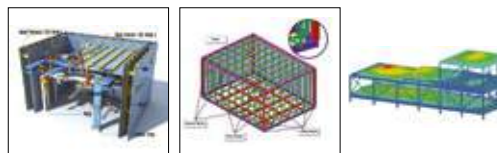
Scope of analysis

Linear, Nonlinear Static & Dynamic, Steady / Transient Heat Transfer, Thermal Stress, Explicit, CFD, FSI, SSI, etc.

Consulting Fields



- FE verification for pressure vessels, storage tanks, heat exchangers and general equipment based on ASME, API and other international standards
- CFD simulation for high pressure and temperature equipment such as HRSG, bag filter, EP, boiler structures and pipes
- Civil structural design of support structures



- Lifting devices analysis
- Transportation analysis
- Designing structures to resist explosions
- Progressive collapse simulation



- Impact & collision evaluation for vehicles, mobile machine and devices
- Impact response simulation of special vehicles & mobile devices (crane, ship-loader)
- General machine (rotating machinery, pumps, fans, valves, etc.) structural analysis



- Power plant structures
- Seismic performance analysis
- Special CFD analysis

BUILDING ENGINEERING

MIDAS IT features outstanding performance and competency derived from successful completions of numerous high profile projects involving local and international skyscrapers as well as industrial facilities. Beyond the fundamental of simply selecting the optimal structural systems, MIDAS IT has extended its services to specialized engineering applications such as vertical member shortening prediction / compensation, wind-induced vibration control, seismic performance evaluation and building health monitoring. MIDAS Building Engineering Business is proud to consistently offer clients only the finest results founded on sound engineering technologies and know-hows.

- Optimal structural system selection and design for tall buildings
- Structural design of industrial, business, commercial, transportation and residential facilities
- VE design technology that enables optimization of construction time, cost and quality
- Construction sequence analysis of mixed materials
- Post-tension and precast concrete structural design
- Column shortening prediction calculation, monitoring & compensation, wind-induced vibration control, seismic performance evaluation and specialized structural health monitoring technology

Residential / Office / Commercial Complex Design



Hwaseong Dongtan Metapolice 1st

Floors 66, 2 levels below ground
 Gross floor area 781,585m²
 Architect Kunwon Arch
 Peer Engineer Thorton Tomasetti (Review)
 Scope of work Structure design (DD / CD)
 Coordination of structural design team Wind tunnel test coordination



Songdo the # Central park 2

Floors 50, 2 levels below ground
 Gross floor area 189,758m²
 Architects Dongill Arch, HOK
 Peer Engineer ARUP (SD,DD)
 Scope of work Structure design (DD / CD)
 Coordination of structural design team / Vertical / horizontal inelastic displacement analysis



Yeouido S-Treue

Floors 36, 7 levels below ground
 Gross floor area 39,600m²
 Architect Mass Studio
 Scope of work Value engineering
 Structure design (CD)



Busan Seomyen the # Central star

Floors 58, 5 levels below ground
 Gross floor area 449,955m²
 Architects Sia Plan, GDS, Dongil Arch, New City
 Peer Engineer Grossman (AR, SD, DD)
 Scope of work Structure design (DD / CD)
 Coordination of structural design team Wind tunnel test coordination Geotechnical design coordination



Songdo POSCO E&C office towers

Floors 39, 5 level below ground
 Gross floor area 148,822m²
 Architects Gansam Partners, POS-A.C, Nikenseki
 Peer Engineer Nikenseki (SD)
 Scope of work Structure design (DD / CD)
 Coordination of structural design team Wind tunnel test coordination



Ilsan MBC broadcasting center

Floors 10, 4 levels below ground
 Gross floor area 78,274m²
 Architects Samwoo Arch, Heelim Arch, Buyoung Arch
 Peer Engineer SDG
 Scope of work SD / DD / CD
 Structure design / wind tunnel test coord
 Site supervision support

BUILDING ENGINEERING

Column Shortening Measurement / Compensation & SHM



Lotte world tower

Floors 123
 Gross floor area 782,407m²
 Structural system RC
 Duration 2010.12 - 2015.10
 Scope of work
 Preliminary analysis
 Column shortening analysis & measurement SHM system



Yeouido IFC

Floors 55, 7 levels below ground
 Gross floor area 507,273m²
 Structural system RC Core + outrigger + SRC column
 Material strength fck=40-60MPa
 Duration 2008.05 - 2010.10



Asan Baebang Pentaport 1,3BL

Floors 66, 5 levels below ground
 Gross floor area 235,146m²
 Structural system RC Core + steel
 Material strength fck=30-60MPa
 Duration 2008.08 - 2011.10



Lotte center Hanoi

Floors 65
 Gross floor area 253,394m²
 Structural system RC
 Duration 2010.09 - 2013.06
 Scope of work
 Column shortening analysis & measurement
 Material test



Sora Hanwha Ecometro 9BL

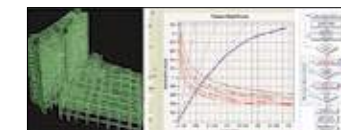
Floors 34 - 50, 2 levels below ground
 Gross floor area 224,313m²
 Structural system RC Core + flat plate + shear wall
 Material strength fck=27-50MPa
 Duration 2008.06 - 2011.02



Dubai Signature tower

Floors 78, 75, 55 (3 contiguous towers)
 Gross floor area 560,000m²
 Structural system Core wall + steel frame + O.B
 Duration 2008.06
 Scope of work
 Column shortening analysis & measurement
 Additional stress review

R&D - Research & Development



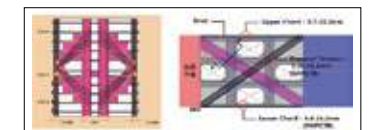
Non-linear seismic performance evaluation

Client Samsung C&T
 Year of performance 2007
 Research
 Seismic performance evaluation through non-linear static analysis / seismic capacity evaluation & seismic performance enhancement



High-rise building wind-induced vibration control & monitoring system development

Client POSCO E&C
 Year of performance 2008 - 2010
 Research
 LCC analysis of wind-induced vibration controllers / column shortening correction & optimization technique



Post-tensioned outriggers in tall buildings

Client RIST (KOEI)
 Year of performance 2008
 Research
 Application of post-tensioning in outrigger construction and its performance evaluation

NEW MEDIA LEADING PARTNER

MIDAS IT's e-Business, an industry leader in the wired-wireless integration era, provides advanced technologies and differentiated strategic services such as Web & Mobile, Media Marketing and 3D CG and Solutions based on cross media platforms to help our clients achieve their business objectives. The track record exhibits MIDAS IT as an exemplified leader for providing solutions in the media platform business. We are capable of launching global portal brands and world-class service systems through aggressive enterprises in international markets.



Web & Mobile

Cross media platform development

Media Marketing

Online based total advertisement management system development

3D CG & Digital Media

3D CG based virtual exhibition
MIDAS VX development

3D Simulation

3D image and physics simulation
4D virtual reality development

Web & Solution

Specialized solution tailored for online businesses

WEB & MOBILE

Through strategic consulting, creativity and the best development capabilities We provide a total service for web & mobile businesses

Web
A distinguished strategic consulting establishment and implementation for the success of client's online businesses, through the supply of highly creative online services

HousinX 2.0 Solution
A real-time customer target marketing support system based on detailed analysis of company's priority customers (age, tendency, pattern, concentrated regions for visits etc.)

e HR Solution
An efficient organizational operations/management strategy organizing system for personnel recruitment, personnel information management, internal community, etc.

Mobile Web/APP
A distinguished mobile service provided by applying mobile environment ecosystems and trend optimized methodologies based on our expertized planning abilities and knowledge

SMART PAD
Based on our Smart PAD technology, developed from out expertized planning ability and know how, our optimized smart application service delivers a distinguished user experience

CT Analysis Solutions
A web based total management solution, providing total support for construction businesses allotment distribution marketing activities from priory allotment distribution marketing issues to the moving in process within an apartment and other residential property management projects

DIGITAL MARKETING

An online based total marketing strategy establishment and practical management service for increasing customer brand value

Web Media Marketing
A web based optimized marketing mix and outcome analysis service, built on our web platform based marketing strategy consulting experience and know how

Mobile Media Marketing
A mobile device based large scale mobile advertisement service by inventory sales service placed within network platforms of monopolizing mobile app advertisement products

Viral Marketing
A viral marketing analysis system service which develops a community with promotional effects and expertise, capable of suggesting marketing method and outcomes for optimized customer attraction

PR Service
A total marketing communication service combining mass media and social media through consistent and collective strategies for development of programs to suit customer's situations, and providing media publicity, PR consulting, campaign/event organization

Social Network Marketing
A new communication service implementing an optimized social media content which targets the modern people who are sensitive to change in trends by tracking the device usage and technological advances

Sales Promotion
device/channel based strategy formation and modification for optimized campaign strategy formulation and overall operational service provision tailored for customer tendencies and campaign objectives through our abundant campaign operations management experience

3D CG & DIGITAL MEDIA

3D CG based specialized interaction technology for an optimized multi-platform virtual exhibition service

MIDAS VX 3D
Brand new graphics program developed to maximize user experience for an accurate 3D virtual contents production

MIDAS VX Intermedia
For producing 3D based animation, video, VR, information video (KIOSK) and other interactive media applicable to various on or offline media channels

MIDAS VX Experience
Distinguished user experience through a new device which combines brand new display hardware and most advanced digital UX

3D SIMULATION

- 3D Image
- Physical Simulation
- Virtual Reality(4D)

WEB & SOLUTION

- M-HR System
- HousinX 2.0
- MGM Sales System
- CT Analysis Management

BUSINESS PARTNERS



WEB PORTFOLIO

Leading company in Online technology

We lead South Korea in web business sector in a broad range of web technologies such as Web & mobile, media marketing, 3D CG, Digital media, and solution. We aim to leap into the international market as a company with a global portal brand and service system.

Leading company in Online sector trend

We have obtained the highest level of web technology domestically for Newest web trend, web standardization, web accessibility certification mark, 3D simulation, etc.



1 iF award 2017 for Apps, Software

midas Insight was awarded 'iF award 2017' Communication> Apps, Software award. It was highly rated for its innovation, aesthetic / design quality and usability from the judges around the world.



2 The Classic 500 Hotel & Senior House Website

Web Award Top Grand Prize for Hotels Sector It provides information for future complex cultural residential space & hotels through refined design contents.



3 Winner of Korea Internet Award

Korea Internet Award is a Governmental award, Awarded to a Select number of Companies, groups and individuals (15 in total) for their Contribution to the development of Domestic internet industry and is regarded as the Most prestigious award in the Internet business sector

4 Dongbu Construction | Centreville

Excellence Award in Construction (2017 Web Awards Korea)

5 POSCO Construction | The shop

Winner of web award Korea 2014 for Contents Innovation



WEB PORTFOLIO

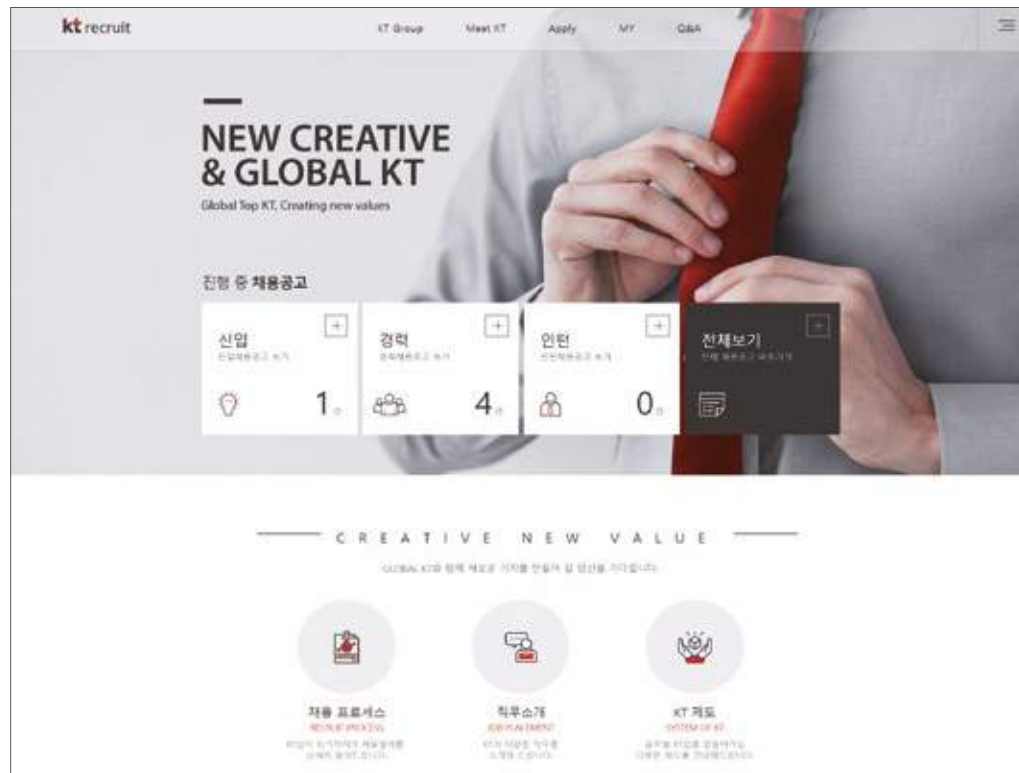
DAIWA Korea | DAIWA Korea Brand + Shoppingmall Website

It strengthens the brand image for phishing, and provides convenient and positive experience for the customers



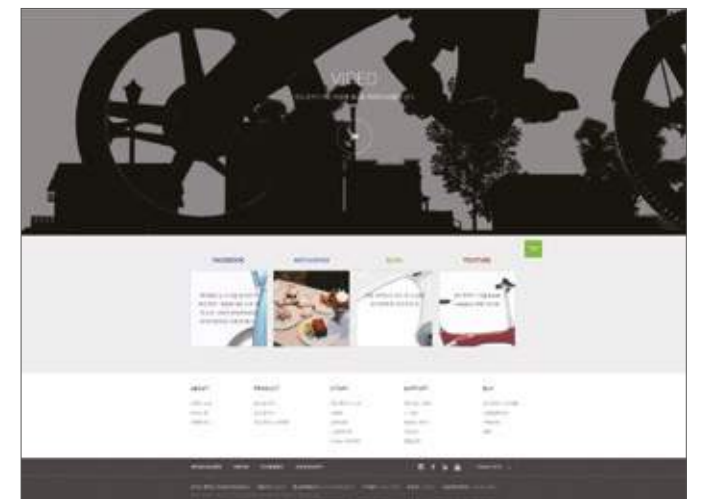
KT | KT Integrated Recruiting Website

It provides competitive recruiting solutions by supporting trendy and smart systems



Mando | Mando footloose Brand Website

Web Award Grand Prize for Leisure and Sports Sector



GS Construction Xi Brand Website

Web Award Grand Prize for Construction Sector



LG Sangnam Library Website

Web Award Top Grand Prize for Non-Profit Organizations



Ramada Plaza Jeju Hotel Website

Web Award Top Grand Prize for Hotels Sector



Daily Newspaper E-daily Website



Sejong Pay Website

Web Award Grand Prize for Financial Sector



KT ESTATE Website

Web Award Grand Prize for Asset Management Sector



RECRUITMENT SOLUTION FOR GROWTH

The recruiting solution business has its ultimate goal of recruiting talented individuals and handling the recruiting process in the most efficient way. By recruiting the appropriate talented individuals, we pursue the growth and happiness of the organization.



midas Insight

An efficient solution for optimized recruitment selection through a merger of recent advances in web technology and research in recruitment

inSEED

Combined Capability Test for Recruitment Selection designed using neuroscience based behavioral mechanisms

midas Insight

midas Insight

Meeting between scientific know how of recruitment and innovative web technology

midas insight is our recruitment solution based on the newest web technology and recruitment research to aid high duty efficiency and optimized key talent acquisition. midas insight helps us to dream of a happier future by assisting development of all companies within Korea through recruitment of talented people.

SMART

Smart solution for increasing duty efficiency

By identifying more effective methods for the way a human resourcing manager completes the numerous recruitment related duties, we can provide an environment to concentrate on duties of high productivity.

Infographic Career Report	Recruiting Network System	Speed Work System
---------------------------	---------------------------	-------------------

CLASS

Quality solution to increase the depth of recruitment

This provides a competitive upgrade for any esteemed company to provide in-depth comparison and analysis report in real time of statistical information based on the systematic recruitment strategy and know how for screening results suggested by expert groups.

Infographic Smart Statistic	Online Interview	Strategy Guide
-----------------------------	------------------	----------------

STYLE

Solution to increase recruitment brand value

Maintaining customer's characteristic recruitment style yet effortlessly implementing midas insight's rationality for an establishment of a competitive recruitment brand.

Recruitment Homepage	Web Stylist	Customized System
----------------------	-------------	-------------------

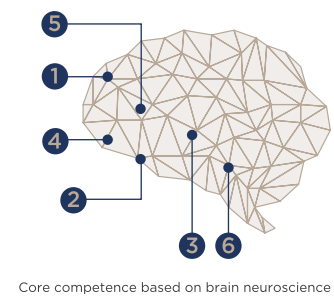
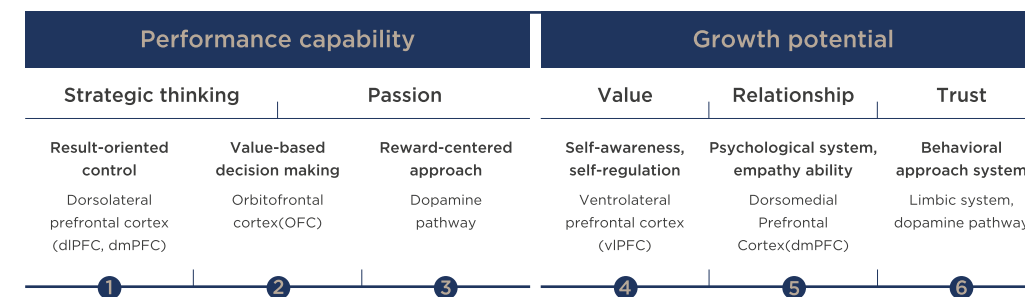
inSEED

inSEED

Integrated competency test designed by the performance action mechanism based on neuroscience

Human brain has evolved to be effective and efficient in solving a variety of problems we may face. Thus, to recruit result and development orientated individuals, we must base recruitment on the operating mechanism of a brain. inSEED has been designed to incorporate 'Human performance behavior Mechanism' by combining neural, psychological, and biological research of the brain.

Selection tool based on neuroscience



Core competence based on brain neuroscience

Composition of inSEED

inSEED is composed of SEED-a for measuring organizational compatibility and development potential, and SEED-b for assessment of performance related attitude and ability.

SEED-α					
Organizational compatibility		Development capability			
Neurosis	Assimilation ability	Trust	Worth	Relation	Passion
Anxiety	Hostility	Active	Responsibility	Respect	Confidence
Depressive	Negativity	Initiative	Sincerity	Attraction	Tenacity
Stress	Impulsivity	Positivity	Honesty	Receptiveness	Thirst For Achievement

SEED-α assesses an applicant's compatibility with the company and the potential for development. An organizational compatibility is a measurement of an individual's characteristics for impeding organizational synergy, and development potential is an assessment an individual's and an organization's ability to draw on their dormant capabilities for performance and development.

299 questions 40 minutes

SEED-β			
Performance attitude		Performance capability	
Curiosity	Self-check	Association	Categorization
Perseverance	Purpose orientated	Language	Visual imagery
Rational decision making	Planning and execution	Acceptance	Logical thinking

SEED-β assesses an applicant's performance related attitude and abilities. The assessment considers both attitude (incognitive) and ability (cognitive) required for increasing performance. These core competences have a direct effect on performance and has been derived from neuroscientific mechanisms.

219 questions 100 minutes



RIGHT HAPPINESS

WE WILL

BE THERE

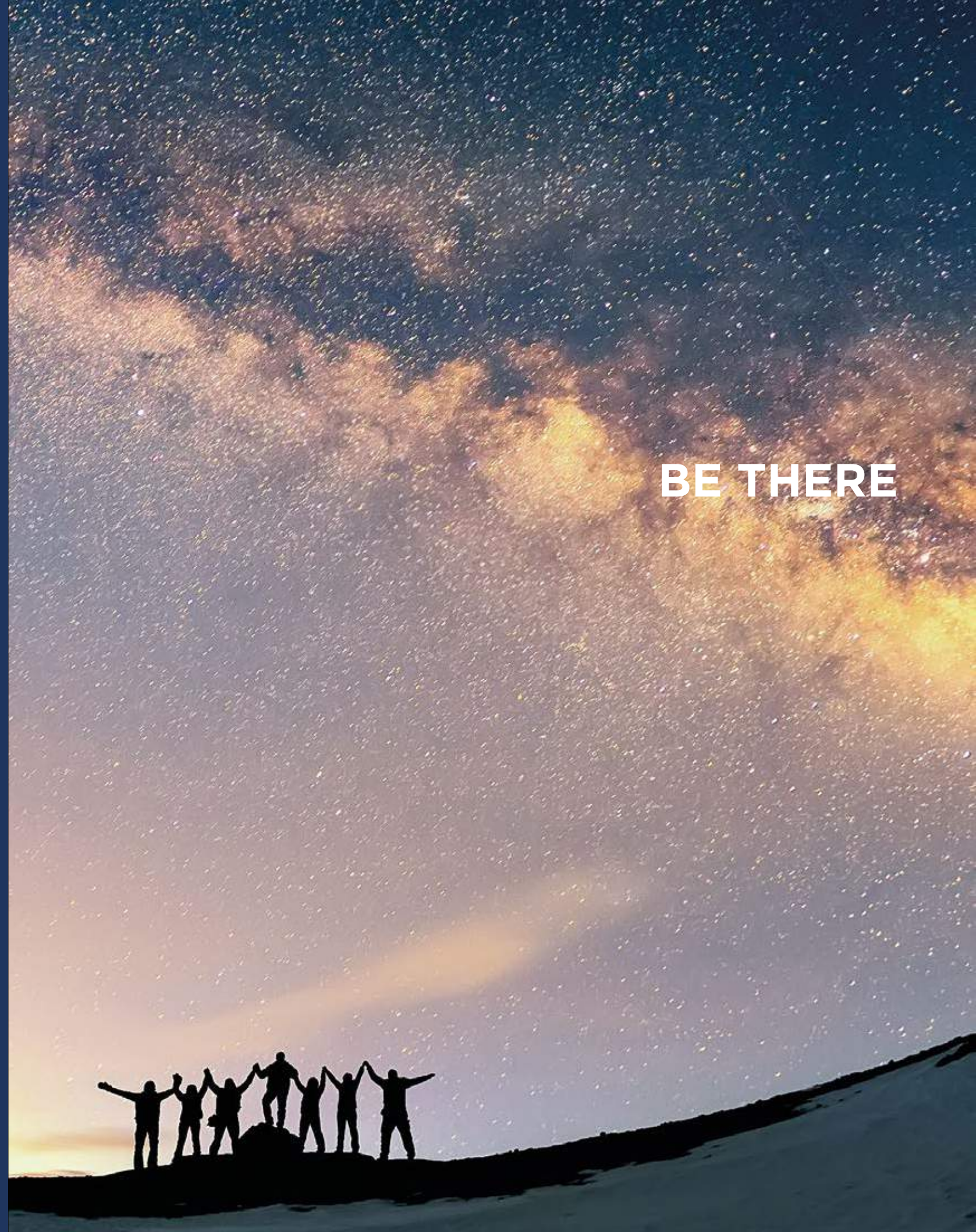
The right path to happiness, we are there.

“How can more people be happy?” We are made up of the people who hold this question close to heart. Just like our life’s goal is happiness, management’s goal is To nurture people to create a happier world. MIDAS IT’s core principles are to pursue happiness, reward, and sharing. These three core principles are the reason for MIDAS IT’s existence, identity, and the most valued principles.

Therefore, all member’s happiness and happiness of the whole world through our technology is what we pursue as our ultimate aim at MIDAS IT.



RIGHT



BE THERE

PHILOSOPHY

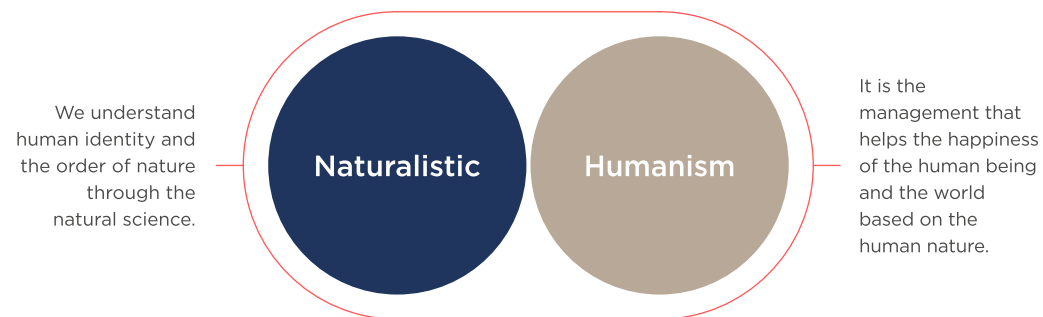
The management objective of MIDAS IT is to follow the natural grains of nature to nurture talent, and Provide the right motivation for self-motivated and voluntary actions To unearth the true value of every individual to increase the happiness of the members, the organization, and the society around us.

自然主義 人本經營

Management that pursues Human Happiness through Scientific Understanding of Human Nature & Natural Laws

Humanistic Ideology of Naturalism is

The future of South Korea responsible for providing rational management ideology, culture, and methodology for small to medium sized companies to nurture talent and help grow their businesses.



The MIDAS Faith

The tree was but a seed before the tree it became And the forest but a tree until more seeds it sowed.

The forest in time shall swell to a mountain full of life teeming with flowers of talent that profusely thrive And bear copious fruits to enrich the natural realm, Unfolding nature's love with fresh air and benign shades. As such mountains connect and amount to ranges, the spirit of altruism shall carry on along the ridges.

Visible life is finite, but invisible faith is an infinite power that never fades.

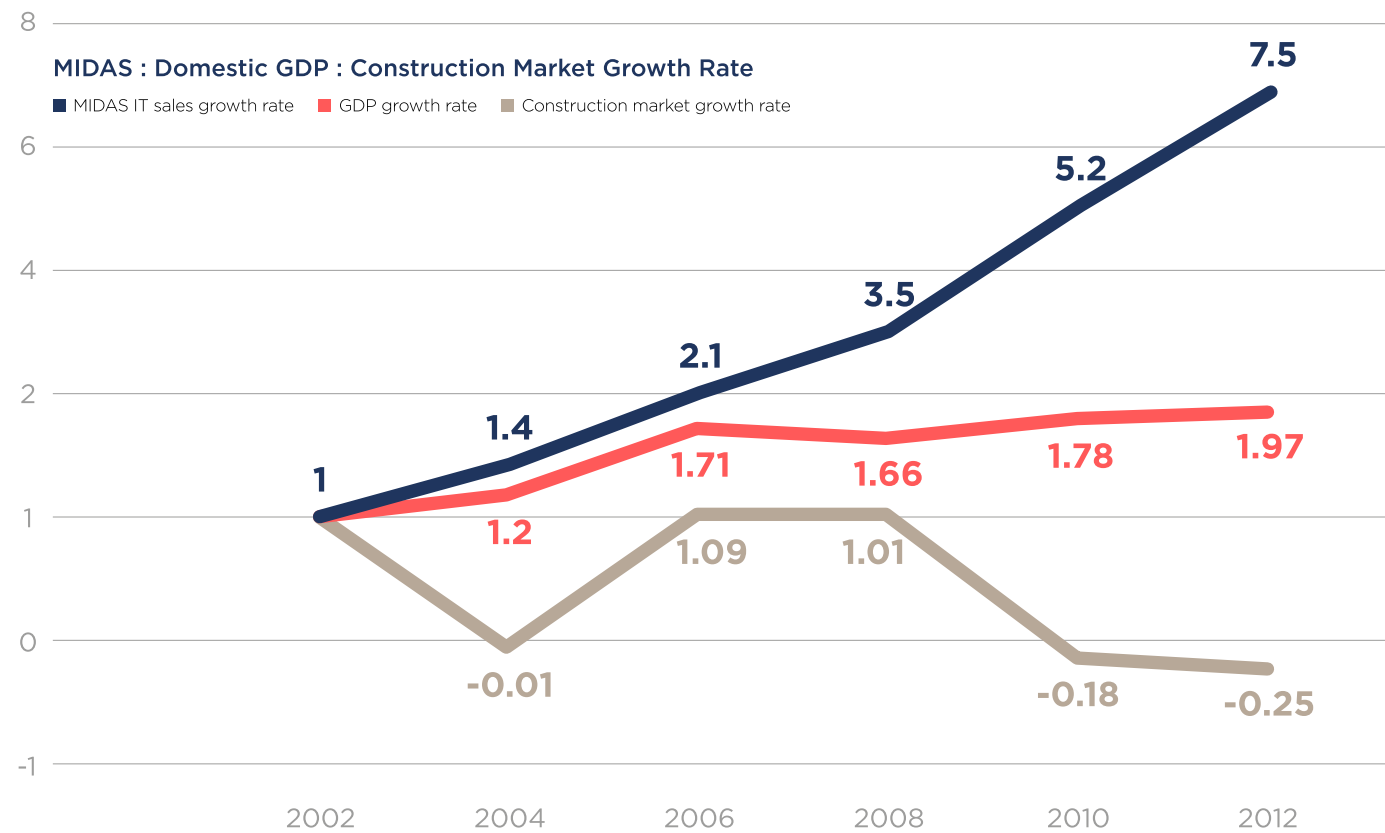
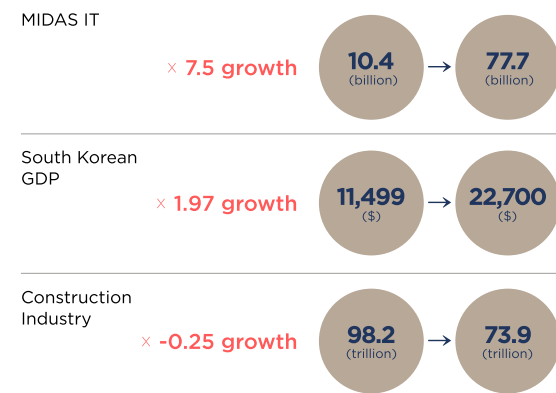
MIDAS IT holds honor in esteem with perpetual passion and moves ever-onward with a compass of core values.

NATURALISTIC MANAGEMENT

Scientific management for maximized effect and efficiency of outcome

If management is an applied action at present for a desirable future, then science is the study of revealing the cause and the result of natural phenomena. Naturalistic management applies scientific interactive relations to management as a management ideology for assisting in production of desirable results.

The key to management is people. Thus, scientific management requires rational understanding of human science as a prerequisite. Naturalistic management amasses a wide range of subjects such as biology, neuroscience, and psychology to gain an understanding of human identity for application to management activities.



HUMANISTIC MANAGEMENT

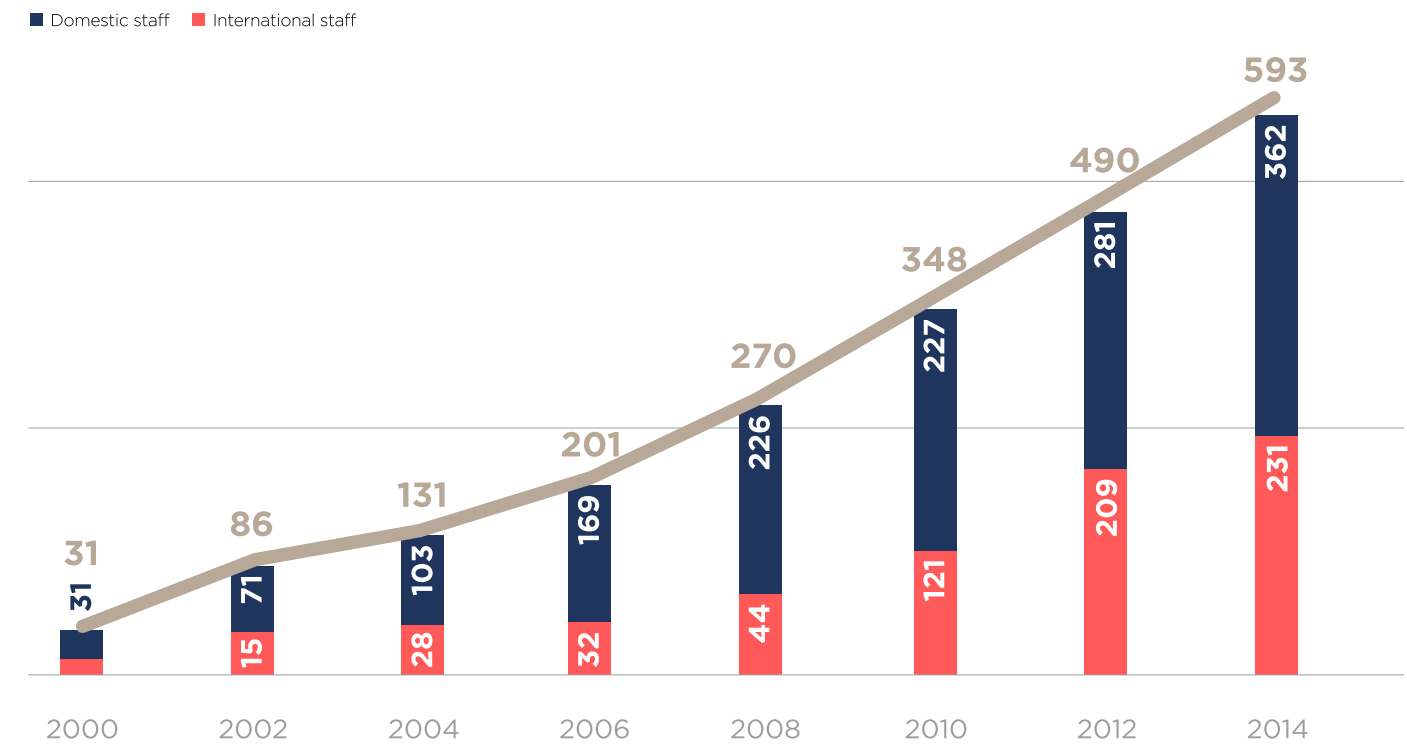
Maximization of total happiness of the people and the world through management

People ultimately desire happiness. Thus, we are all managers of happiness. Individuals through personal life management, and companies through results management, we are all in pursuit of happiness.

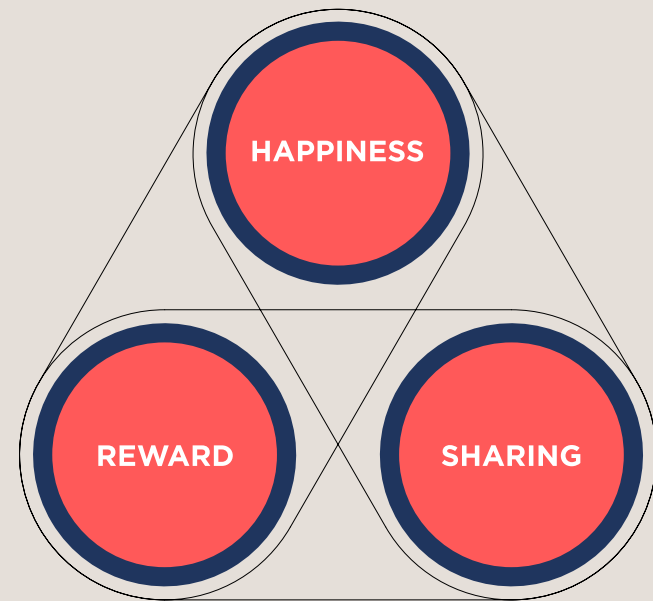
Everyone has the right to pursue happiness. Likewise, humanistic management places people as the objective in pursuit of nurturing talent rather than profit. Following the natural grains of nature to nurture happiness of individuals to contribute to a happier world, that is the aim of humanistic management.



Approx ×20 growth in staff members



CORE VALUES



HAPPINESS

The Life of Self-actualization

Happiness as defined by MIDAS IT is manifesting the full potentials of the self and the organization. MIDAS IT provides all staff members the opportunity for professional and personal growth aligned with the growth of the company oriented toward the betterment of mankind.

REWARD

The Life of Achievement

The life of a technologist is intrinsically rewarding. The sense of achievement in developing cutting-edge technology and the sense of fulfillment in seeing clients and people benefit from its application drive the technologist's life to higher aim and social success.

SHARING

The Life of Compassion

Sharing is the act of returning the fruits of one's earnest labor to the world in need. MIDAS IT believes our talents and abilities are not inherently our own but briefly entrusted to our jurisdiction by the nature and the society. Hence, sharing is not only a virtue but an obligation that completes our reason for being.



Happiness.

Company that works towards a better today, and an even better tomorrow

All members as one through respect and trust, We work tirelessly to increase the quality of life we enjoy now and for a stable future.

Happy MIDAS Day

MIDAS IT provides an annual event for all members to solidify teamwork. We push for progress and growth with a belief in the fact that one plus one is more than two.

MIDAS Sales Festival

Members feel the sense of happiness by being able to support each other and development. Recognition and respect for each and every individual provides joy, gives energy to the organization, and make the world happy.





Reward.

Best reward for work is 'worth'

When valuable contribution to the world is made, people feel sense of worth. Members of MIDAS holds worth to enlightening the world with the best technology.

MIDAS Advanced Strategic Sales by Marketing

MIDAS IT provides solution needed by the humanity for the development of the society. Large scale seminars to transfer high standard of technology to the world. We feel sense of worth by transferring our technology to our precious customers.



Sharing.

Creating a beautiful world by sharing

Creating a beautiful and warm world by returning to the world those that we have receive from the world. Sharing is the reality of open love and the genuine completeness of our existence.

Social Contribution Activities

We have the deepest regards for the lives of ourselves and our family, and respect and trust for those around us. MIDAS IT communicates with the world and contributes towards collective growth through a variety of support and volunteering activities.



PRACTICE OF SHARING

We strive to minimize the sufferings of the greatest number of neighbors, which are directly related to human survival.

DAY

Good Attendance Charity

\$10 donation per person to community welfare centers

Breakfast of Love

\$1 saved per every breakfast on the company's expense to donate briquettes to underprivileged neighbors

MONTH

MIDAS Love Day

Fund raised from the Secret Chef event used to prepare and deliver boxed supper to local solitary senior citizens

Last Digit Savings

Donating by choice the last digit of the monthly salary to sponsor vaccine and mosquito nets for the children of Africa

Homeless shelter

Free meal service

YEAR

Sharing Point

Sponsoring wells for India projects

Marathon of Love (1km = \$1)

Supporting rare and obstinate disease children of low-income families

Rice Wreaths

Donated to food service centers for the homeless

Blood donation

Picnic

Improving residential environment

MIDAS sharing shop

Life Saving

- Digging Wells

With the sharing point collected by company members' sharing activities, we establish wells and water pumps in Indian villages to supply safe drinking water to Dalits (Untouchable) in India who have to walk three hours a day to secure drinking water.

- Supplying Vaccines

About 6 million lives of children are lost in developing countries due to contagious diseases. Simple supply of vaccines can save countless number of lives. MIDAS IT prevents contagious diseases of global children such as cholera or polio, by conducting last-digit saving of monthly salaries.

- Supplying Mosquito Nets

Setting up insecticide-treated mosquito nets can prevent more than 90% of malaria which is the leading cause of infant mortality in Africa. We participate in extermination of malaria by sponsoring mosquito nets. MIDAS IT protects the infant lives threatened by malaria by conducting last-digit saving of monthly salaries.

Medical Aid

- Helping Patients with Incurable Diseases

We sponsor medical fees and rehabilitation expenses of patients with incurable diseases so that they would not give up on receiving treatment due to financial difficulties. The patients are suffering from incurable diseases such as Parkinson's disease, biliary atresia or Noonan syndrome whose cure as well as the cause of disease is undeveloped.

- Funding the Surgery of Low-income Children with Disability

We prevent the aggravation of disability and support rehabilitation process by funding the surgery of low-income children suffering from congenital facial malformation. MIDAS IT enhances physical strength of company members by running a marathon and sponsors the children suffering from disability.

Meal Support

- MIDAS LOVE DAY – Sharing the Packed Meal of Love

Every first Friday of the month (MIDAS LOVE DAY), MIDAS members provide special meals to senior people living alone who may skip meals due to financial difficulty or uneasy physical movement.

- Volunteering in Cafeteria

We prepare meals in soup kitchens every first Saturday to prevent starvation of the isolated neighbors. For senior people, meals are served in SUJUNG Senior Welfare Center and for homeless people, meals are prepared in Anna's House.

Since our abilities belong to the world,

We must return the benefit we gained from the world.

Since our resources are limited,

We must minimize the suffering of the greatest number of people.

Since it is not a special thing to help troubled neighbors,

We must make it a daily habit to help our neighbors.

We strive to realize the true value of building a world where everyone lives together.

Establishing a Stable Living Environment

- Sharing Briquettes of Love

About 1 dollar(\$) is saved per every breakfast on the company's expense to donate briquettes to underprivileged neighbors who desperately need them to get through cold winter.

- Habitat

For neighbors suffering from poor living environment, we build houses by cementing and nailing the wall by ourselves. With Habitat, we can provide comfortable homes to those troubled neighbors.

- Improving the Living Environment

We improve the poor living environment of low-income senior citizens in Seongnam area, who are unable to move freely. We paper the room, change the floor paper and clean the whole house by ourselves in order to establish stable living environment for senior citizens.

Other Activities

- Blood Donation

We participate in blood donation to save neighbors suffering from lack of blood.

- Sentimental / living environment Care for the Elderly

We pay a regular visit to elderly nursing homes in Seongnam area and keep company of the aged people with dementia or take a friendly walk with them. By conducting sentimental care and indoor-outdoor cleaning, we are making effort to establish stable and pleasant living environment for the elderly.

- MIDAS Sharing Market, Clothes Sharing of Love

At the end of each year, MIDAS Sharing Market and Clothes Sharing of Love are held for all the company members to participate. With the profit gained from selling the donated home appliances and toys, we support the heating bills of troubled neighbors. Donated men's clothing is given to the homeless people to get through a warm winter.

- Good Attendance Charity

Good attendance teams which have kept prompt arrival times are selected every half a year to collect 1 dollar(\$) per team member for each month. We sponsor meals of senior citizens and the homeless under the name of the good attendance team.

- Rice Sharing of Love, Rice Wreaths

Instead of flower baskets which are sent to company members on anniversaries and special occasions, 10 kg of rice is shared with the neighbors in need.



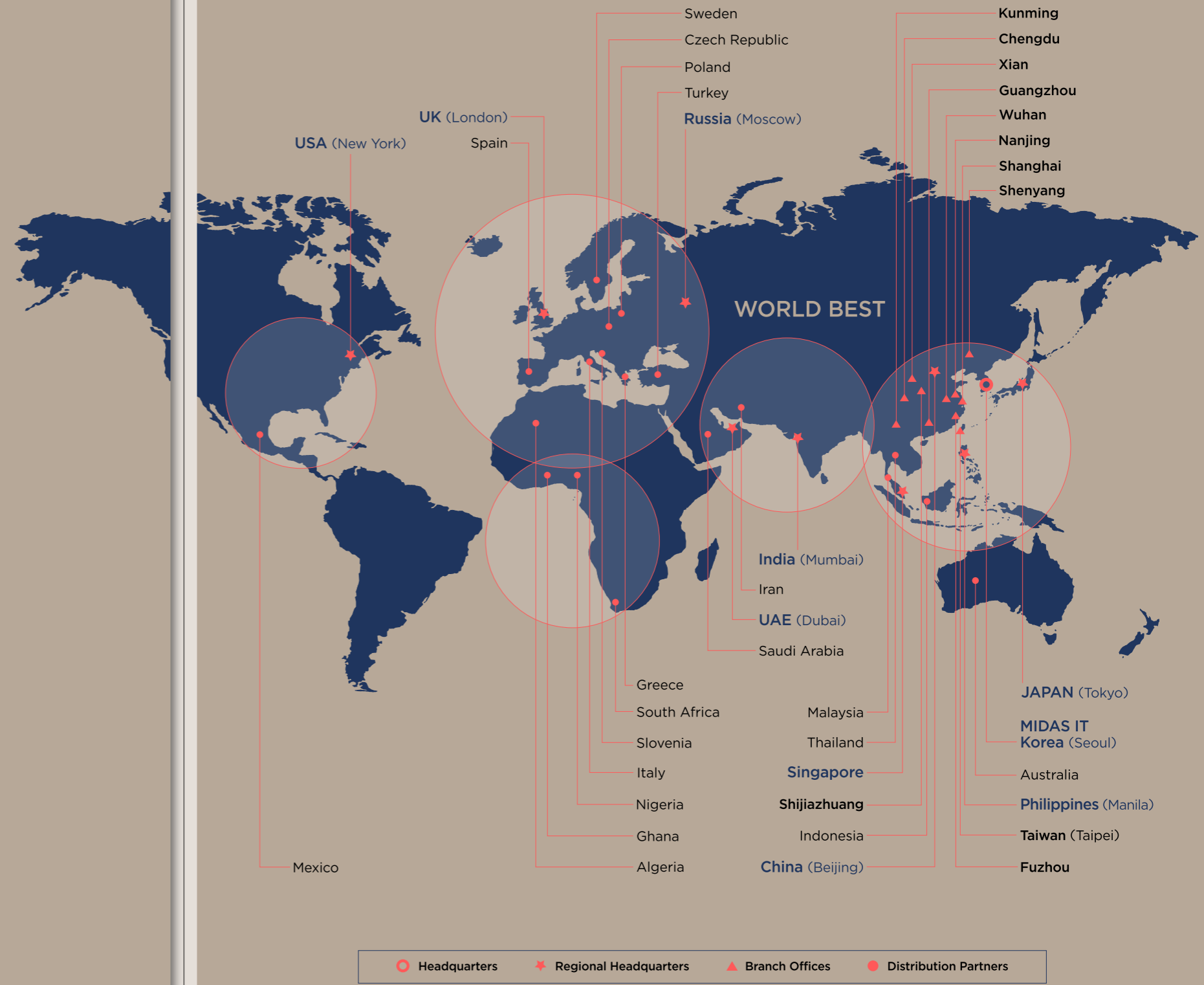


MIDAS IT strengthens its team work through activities where every member of its organization can participate.



GLOBAL NETWORK

MIDAS software is distributed over 110 countries through 9 overseas corporate offices and 35 regional business partners around the world.



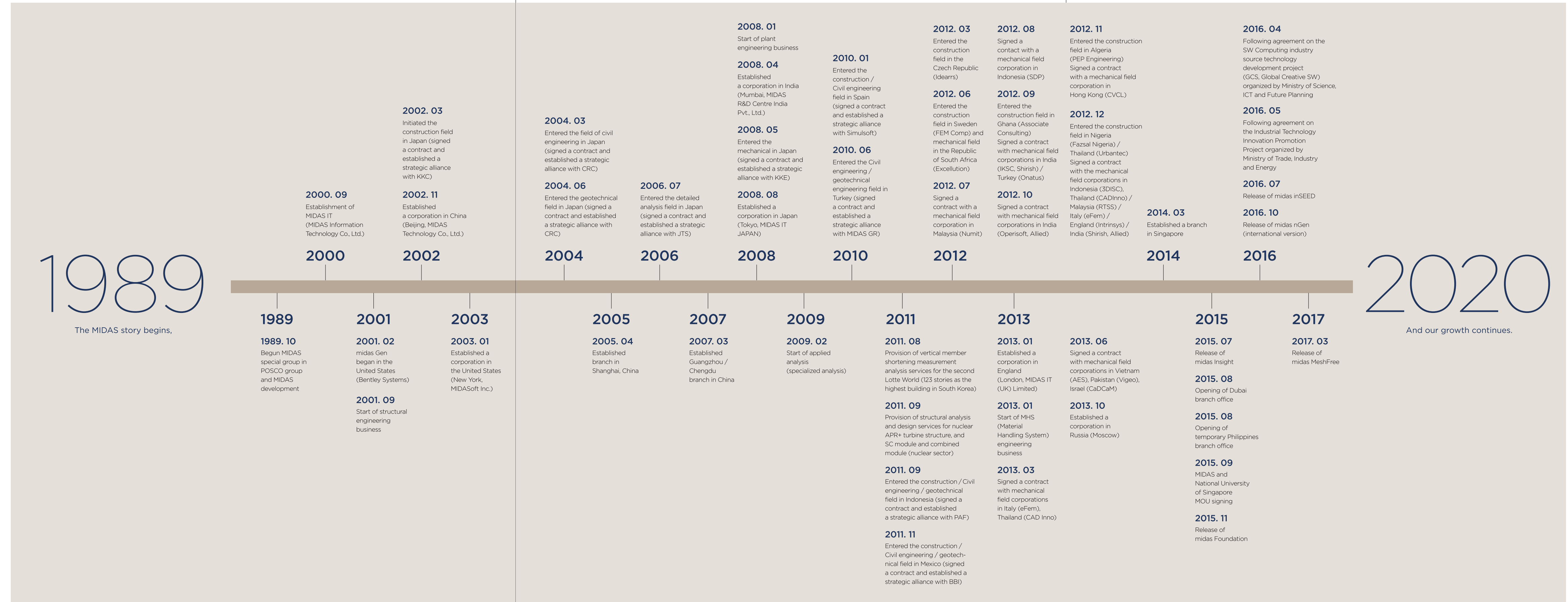
HISTORY

MIDAS IT has been striving since 1989 for our technology to advance and to obtain technological independence.

CERTIFICATIONS MIDAS IT has been evaluated as a medium-size enterprise where leads innovative technology in IT field and is rated as the best company in construction IT area.

2001/2013	Won a 'Jang young sil award' by the Korea Industrial technology promotion association	2013	Won a 'Jang young sil award' (midas eGen)
2002	Won a grand prize of venture business by the Ministry of Commerce	2013	Won a WBS Minister prize by the Ministry of future creation science
2002	Acquired ISO9001 Certification in quality management system construction	2014	Winner of Web Award Korea 2014 for contents innovation
2002	Acquired ISO14001 Certification in environment management system	2015	Winner of Web Award Korea 2015 for hotel sector, webzine sector, and leisure/sports sector
2002	Won a grand prize of Korean S/W by the ministry of information and communication	2015	Winner of web award for recruitment sector (midas Insight)
2004	Won a grand prize of Digital Innovation	2015	Winner of internet eco award for UI/UX sector (midas Insight)
2004 /2008	Selected the first-class in merchandise in the world by the Ministry of Knowledge Economy	2016	Selected as the overseeing organization of the GCS project by the Ministry of Science, ICT, and Future Planning
2005	Won a business innovation award for small businesses / The first prize by the Ministry of Commerce	2016	Selected as overseeing organization of the Industrial Technology Innovation Plan by the Ministry of Trade, Industry, and Energy
2006	Certified as a New Electronic Technology(NET) by Ministry of Science and Technology	2016	Winner of Web Award Korea 2016 for nonprofit organization sector, and leisure/sports sector
2010	Won an Industry Service Medal at the New Technology competition by the Ministry of Knowledge Economy	2016	Winner of internet eco award for HRD sector (midas inSEED)
2011	Selected as one of the WORLD CLASS 300 enterprises by the Ministry of Knowledge Economy	2017	Winner of iF Design Award for App/software in Communication (midas Insight)
2011	Selected as 3 rd project advocate of WBS (World Best Software)		

KEY PARTNERS



We do the right things the right way
upholding the world's happiness as
the true direction of our compass
following the humanity's happiness
as the right direction to lead and
change the world from its center.

Publisher MIDAS IT
Designed by S/W Business Planning Division Brand Design Section

Address MIDAS IT Tower, 17, Pangyo-ro 228 beon-gil, Bundang-gu,
Seongnam-si, Gyeonggi-do, 13487, KOREA
www.midasit.com
